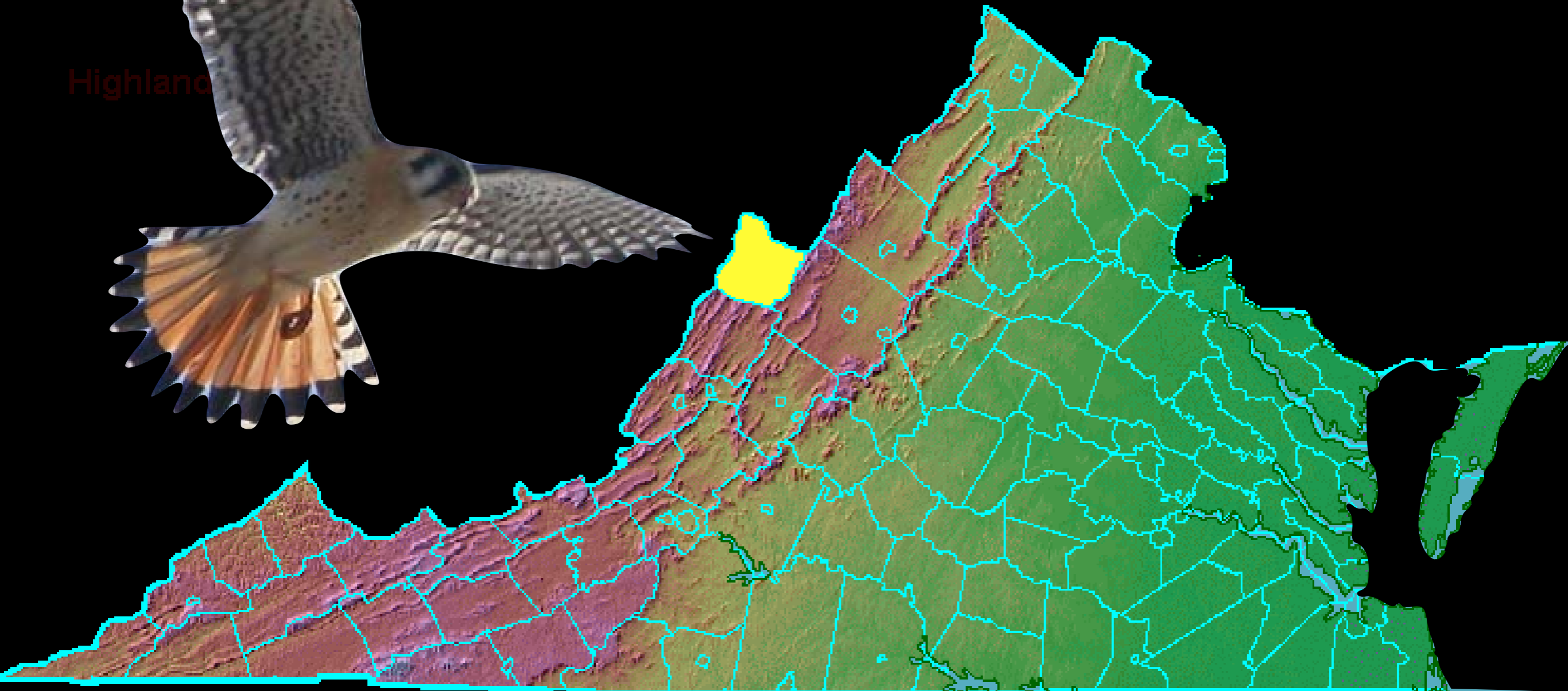


# American Kestrel Project in Virginia

Patti Reum  
&  
John Spahr

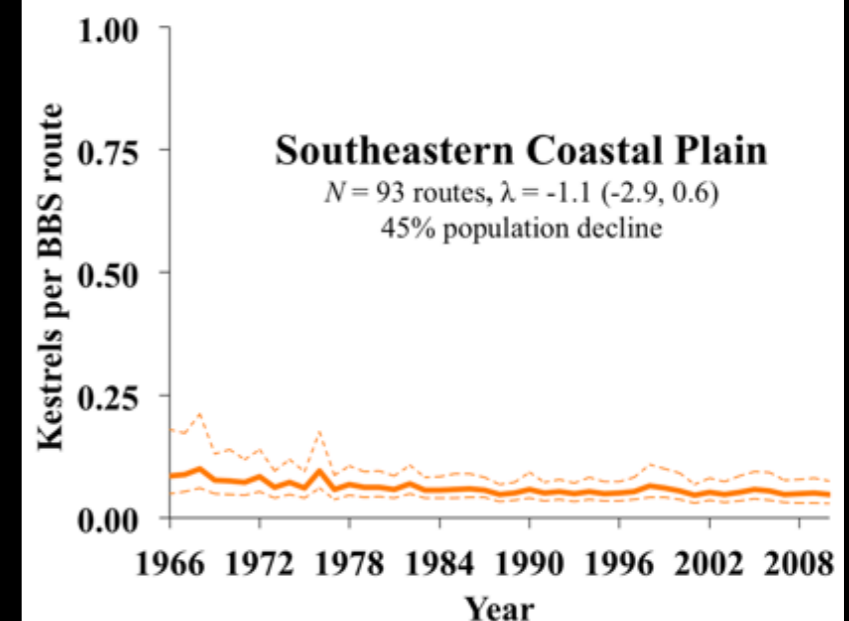
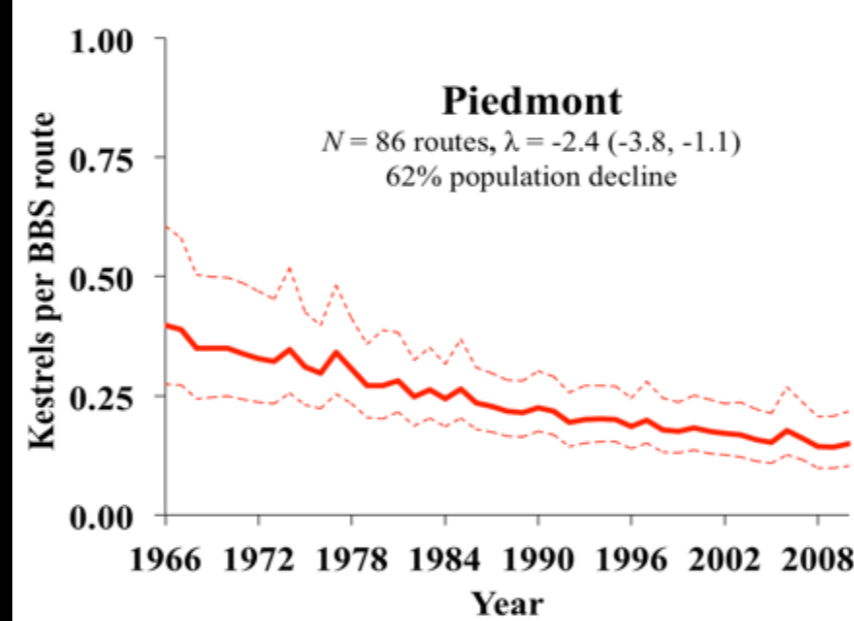
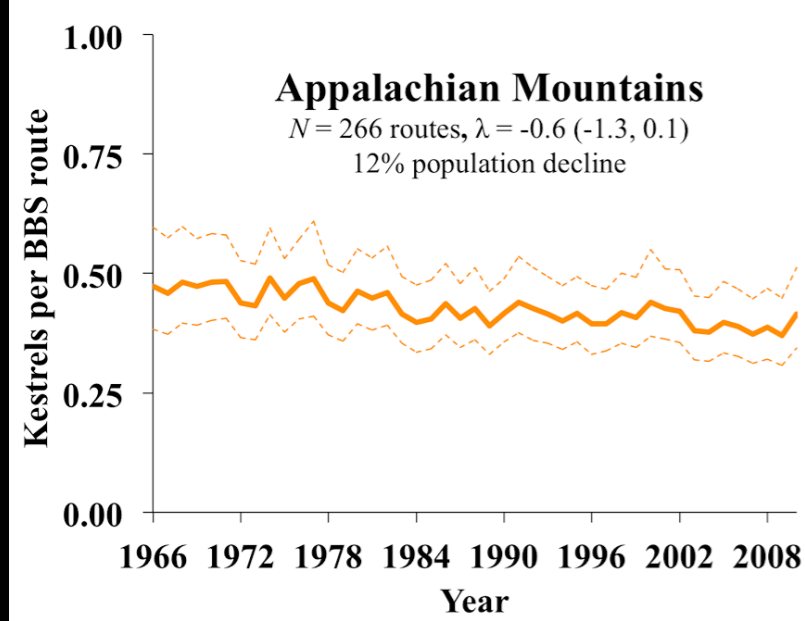
Highland



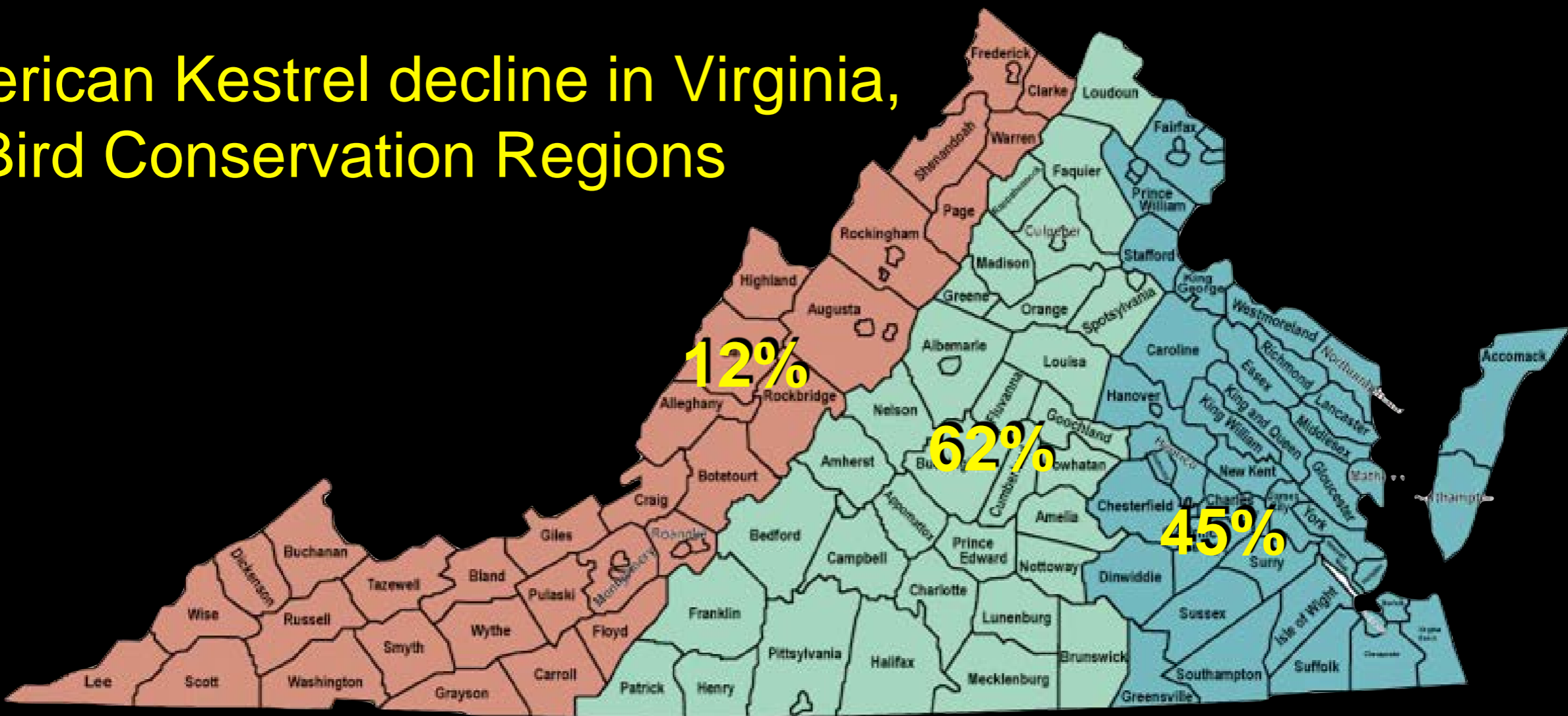
# American Kestrel Nesting Box Project: A Volunteer Effort of The Virginia Society of Ornithology (VSO)



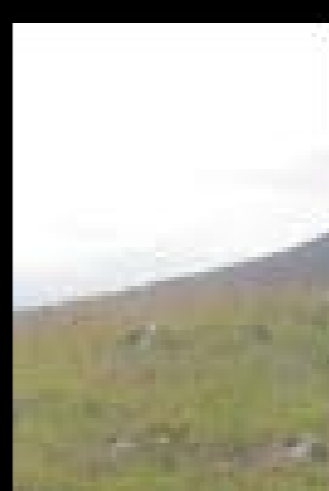
2014



# American Kestrel decline in Virginia, by Bird Conservation Regions







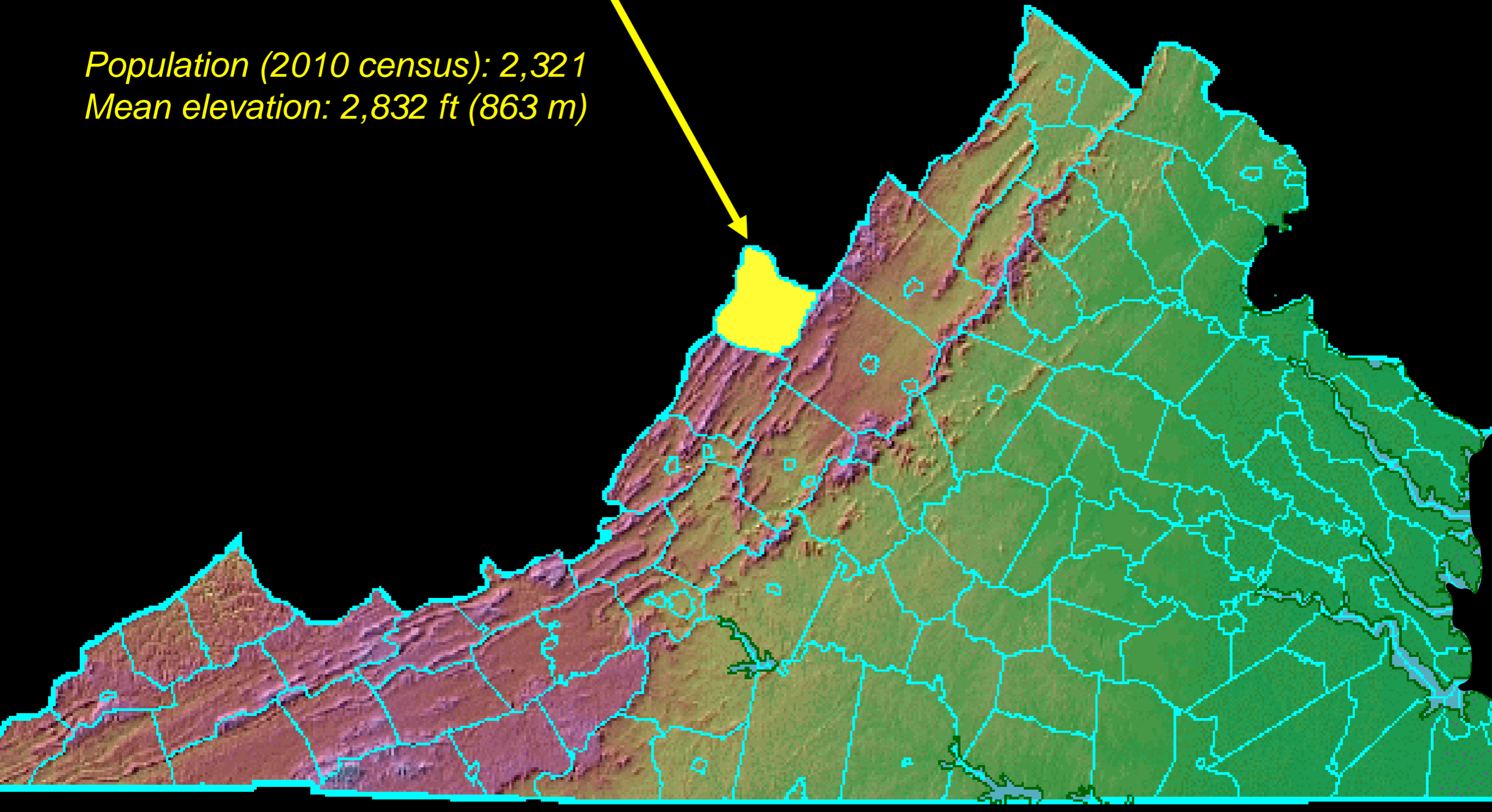
2 x 1 x 1 foot  
3" diameter hole  
Side opening for monitoring





# ***Highland County, Virginia***

*Population (2010 census): 2,321  
Mean elevation: 2,832 ft (863 m)*











# Blue Grass Valley AMKE Project



# Blue Grass Valley Study Area

- Study Area: 10,878 ha (108.8 km<sup>2</sup> or 42 mi<sup>2</sup>)**
- Elevation range: 983m - 856m
  - 60.2 km (37.4 mi) of public roads

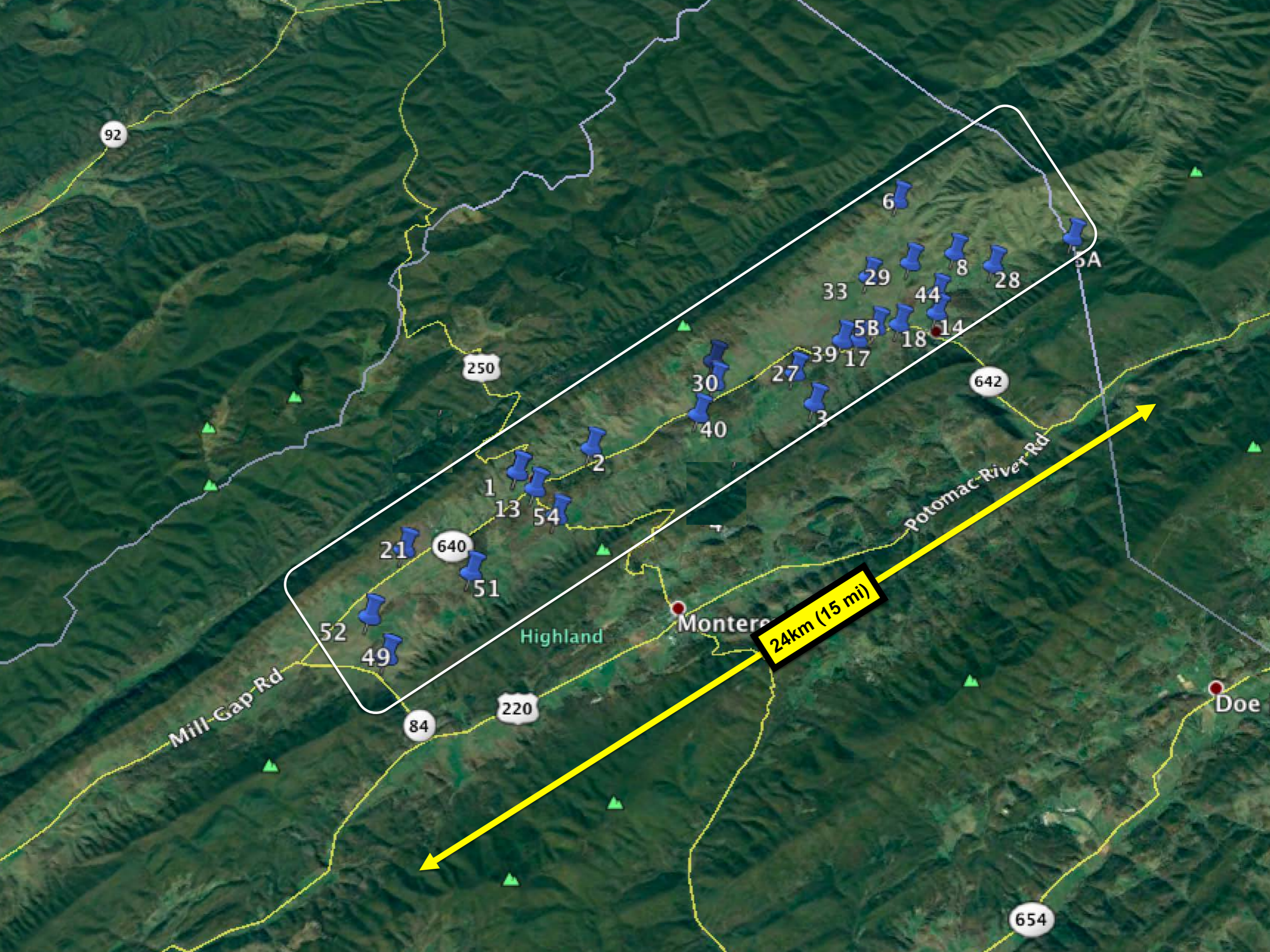
# Blue Grass Valley AMKE Project





**Blue Grass Valley AMKE Project**





92

250

642

640

24km (15 mi)

220

654

Mill Gap Rd

Potomac River Rd

Highland

Monterey

Doe

52

49

84

51

1

13

54

2

30

40

27

33

29

5B

18

8

28

44

14

39

17

3

6

5A

21

5





Begin monitoring late April  
Check boxes bi-monthly  
Evict starling if present  
Record observations





**1) Migratory vs Year-round population?**

**2) General health of birds?**

**3) Productivity & fledging success?**

**4) Breeding site fidelity?**

**5) Size of Territories?**

**6) ??**







**Farming practices that help or harm kestrels.**







# American Kestrel Project in Virginia

Patti Reum  
&  
John Spahr

Highland County  
...to be continued.

