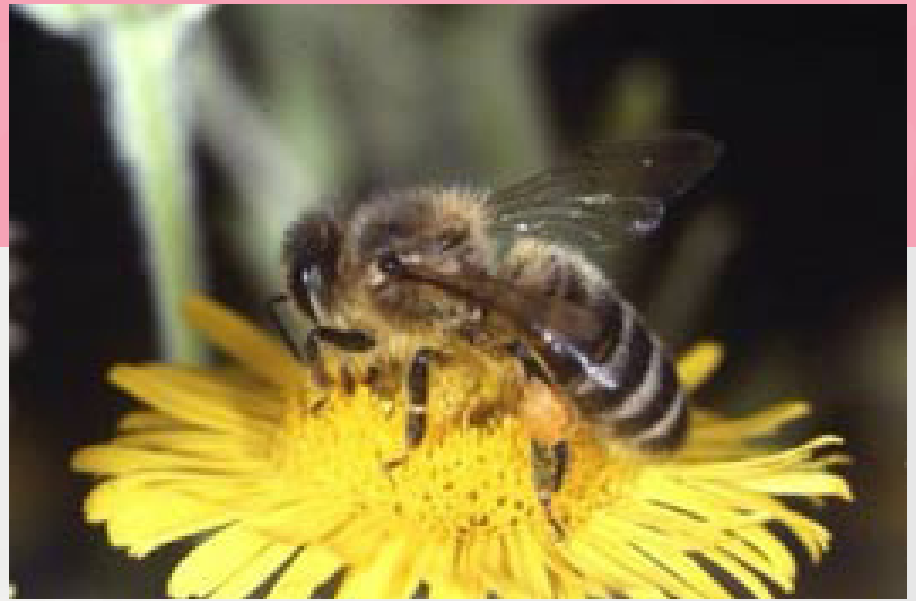


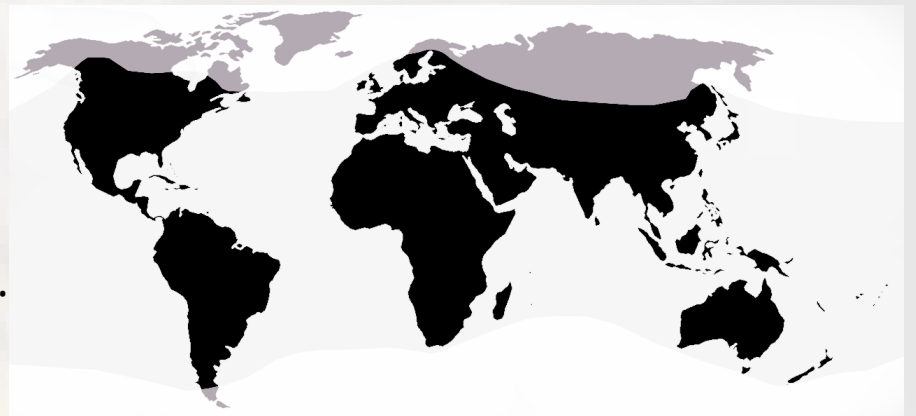
ITALIAN HONEY BEE

Apis mellifera











FUN FACTS

- The Italian honey bee is the most widely distributed of the honey bees, because it is able to adapt to most climates.
- Brandywine Zoo currently has one observation hive inhabited from early May through mid-September.
- Bees fly about 20 miles per hour.



THREATS & CONSERVATION

Colony collapse disorder occurs when most of a colony's worker bees abandon the queen. While this has always happened throughout history, since 2006 the rate of collapse has nearly doubled.

class <i>invertebrate</i>	biome <i>mixed</i>	diet <i>herbivore</i>	body temp <i>ectotherm</i>
			
			
biorhythm <i>diurnal</i>	birth <i>oviparous</i>	interaction <i>social</i>	habitat <i>aerial</i>