

# Northeast Connecticut Kestrel Project

[www.nectkestrels.com](http://www.nectkestrels.com)

Working to help rebuild local populations  
of the American Kestrel.....

One box at a time



Google earth

Imagery Date: 3/29/2012

41°55'35.09" N 72°33'35.13" W elev 95 ft

Eye alt 20.54 mi





Clark Rd

Frog Hollow Rd

140

286

83

Windermere Ave

Lower Butcher Rd

Pinney Rd

Windsorville Rd

Rockville Rd

© 2012 Google

Google earth

Imagery Date: 3/29/2012 1990

41°53'10.27" N 72°27'42.51" W elev 260 ft

Eye alt 18170 ft



Bad Idea.....I had lots of them in the early days.



Good idea.....

Place the box in an open area with  
at least 20 acres of open field in the area.

Get the box as far out in the open as possible.



I refer to these areas  
as microhabitats. I  
believe they are very,  
very important.



# Perfect kestrel habitat

Milkweed, vetch, Black-eyed Susan, Queen Anne's lace, Daisy fleabane, mullein



# April

What you don't want  
to see.....

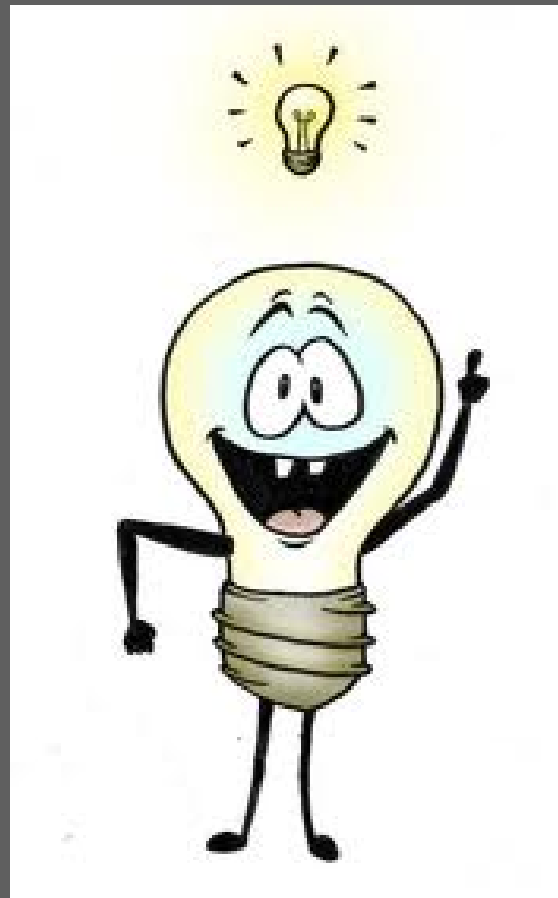


	date		cleaned out	no activity	non target species using box	birds in vicinity	eggs in box	birds in box	birds banded
Mansfield	3/23			x					
Brown's Road	3/26			x					
	3/27	STR							
41 47.588	4/1				st				
072 22.820	4/2	STR							
	4/3	F			st				
	4/4				st				
<a href="#">back to index</a>	4/5								male banded at box
	4/7			x					1783-598-18
	4/10			x					
	4/11			x					
	4/13	pair							
	4/14			x					
	4/15			x					
	4/16	pair							
	4/20	M							
	4/29	pair							
	5/6						4		
	6/4								AM recap
									1783-598-18
	6/6								AF 1783-70636
	6/6							2 DO	
	6/23								LF 20 178370690
									LF 20 178370691
									LM 20 178370692
									LM 20 178370693
									LM 18 178370694





What have I learned in the last six years?





How Close Will Kestrel Pairs Nest to Another Kestrel Pair?

An example of what I call **saturation**.



Ruler

Line Path

Measure the distance between two points on the ground

Map Length: 302.11 Yards

Ground Length: 302.12

Heading: 25.51 degrees

Mouse Navigation

Save Clear

Lipton North

Lipton South

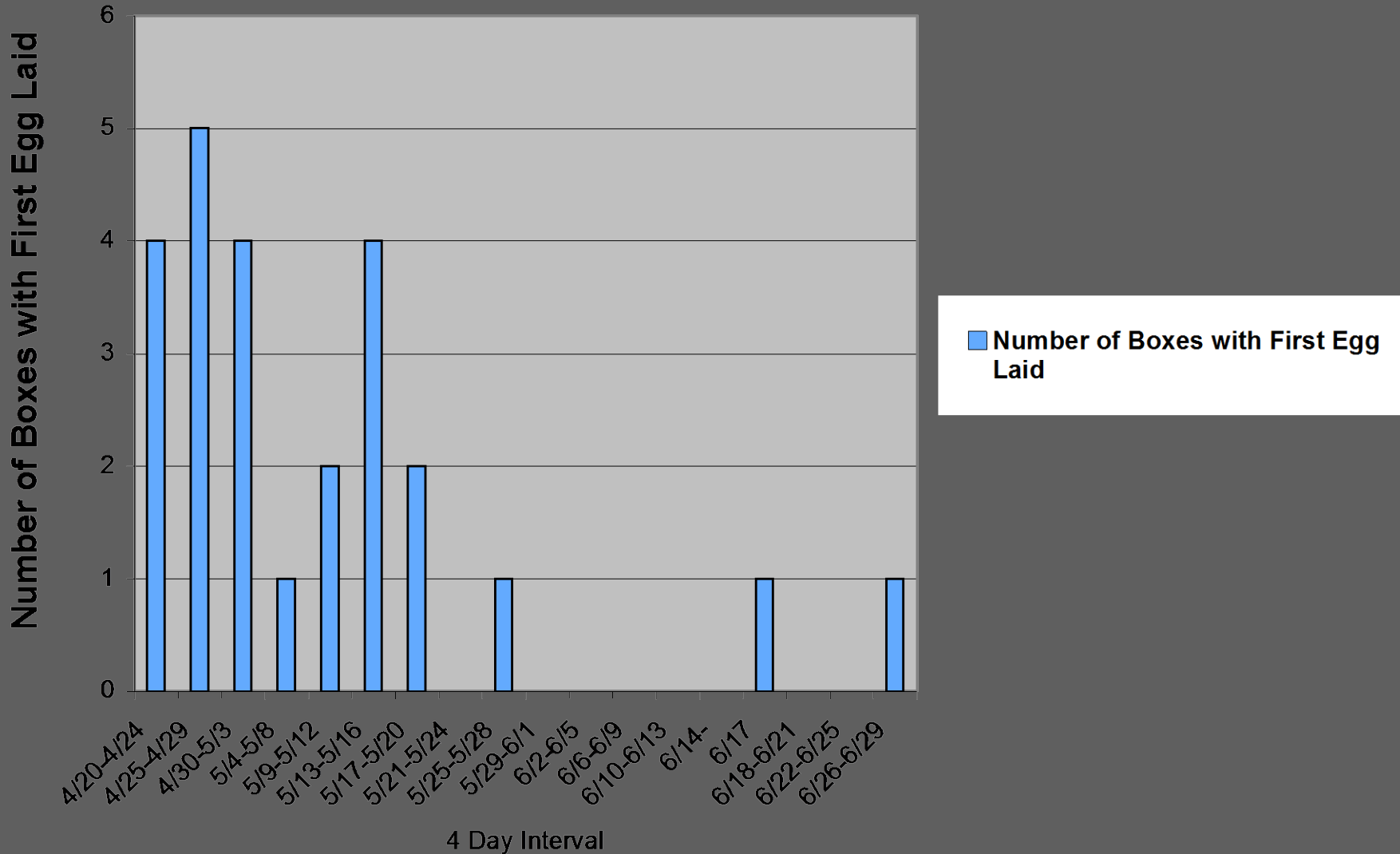
Egypt Rd



How Long Is the Active Period for Egg Laying?

The window for egg laying *could* be as long as 6 weeks or more.

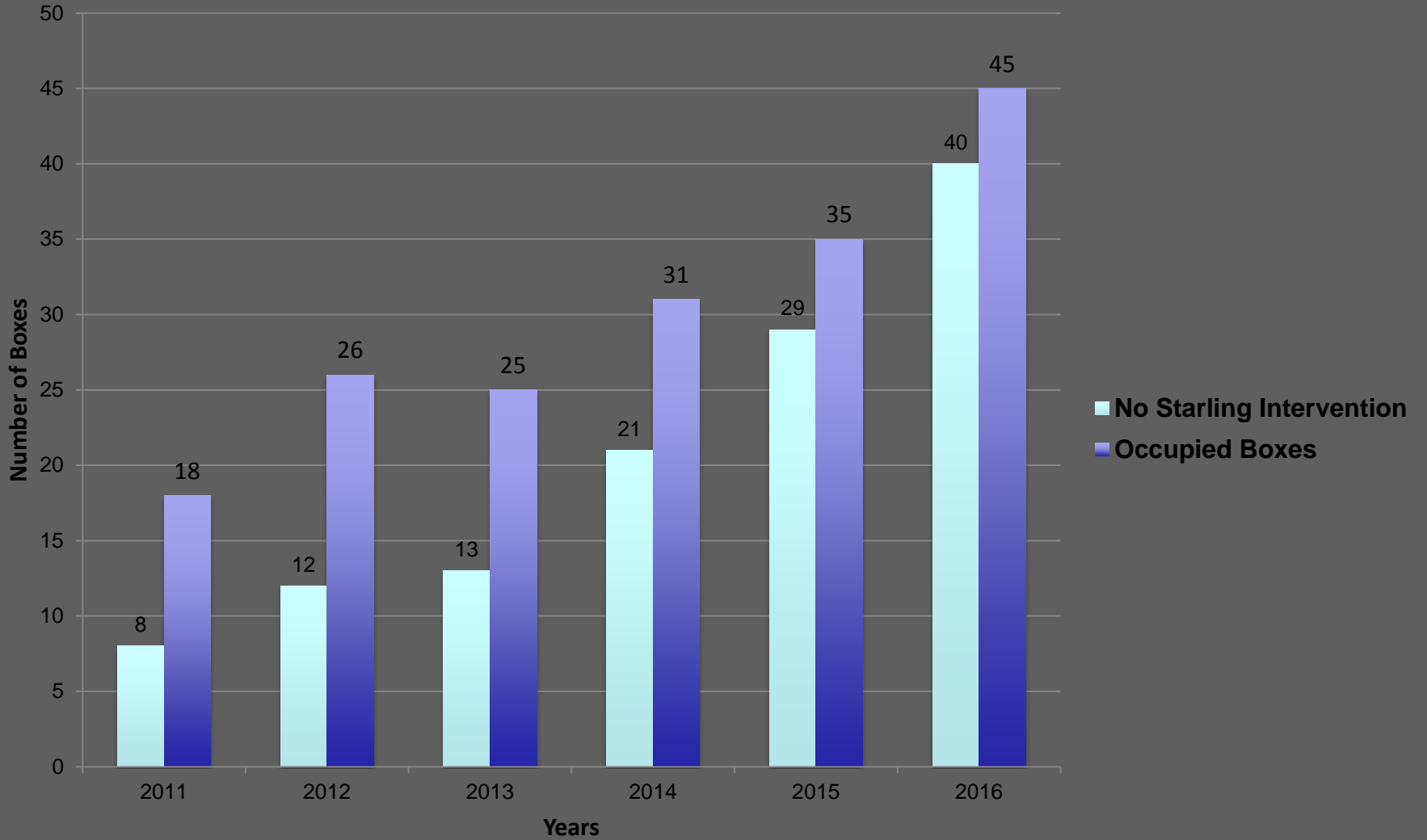
2013 First Egg Laying Dates by Week





What Effect Does Eliminating Starlings Have in Overall Nestbox Success?

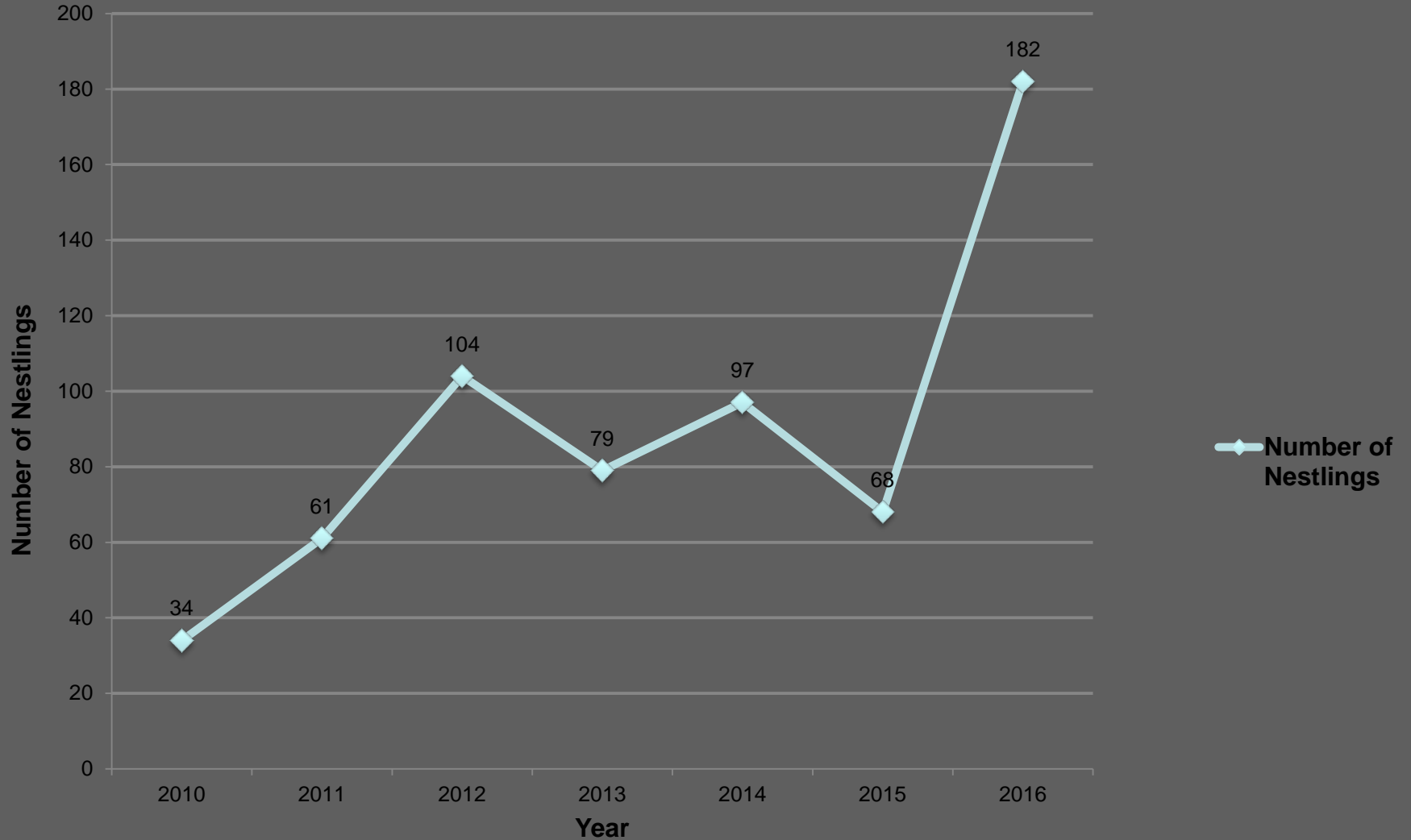
# Number of Occupied Boxes Requiring No Starling Management 2011-2016





What are the return rates of both nestlings and adults to the study area?

## Number of Nestlings Banded Over Time 2010-2016





# 2016 Recapture Data Analysis

1. Total Number of recaps= 30

a.) Number of recaps originally banded as adults:  
16 (53%)

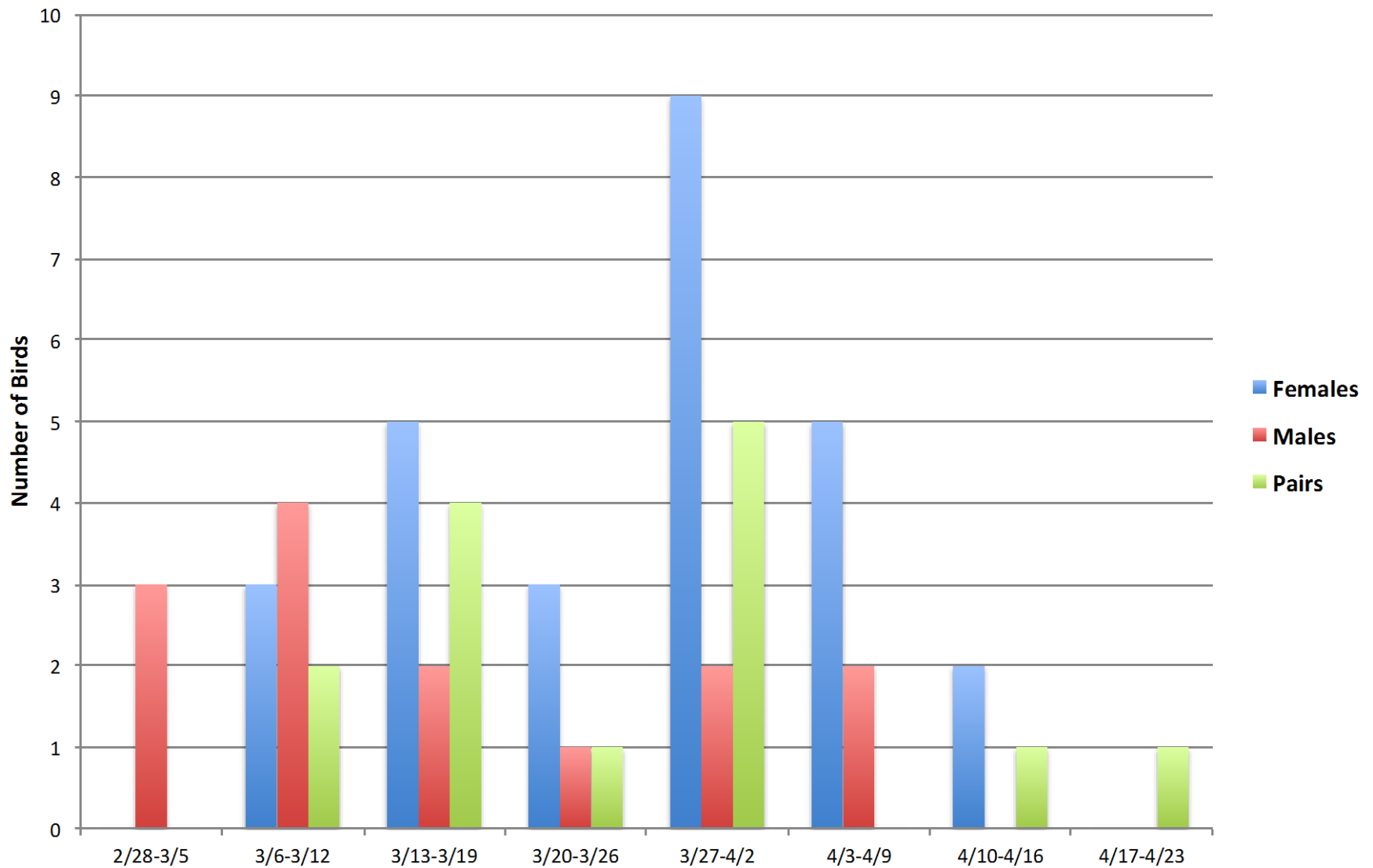
b.) Number of recaps originally banded as  
nestlings: 14 (47%)

c.) Number of total male recaps: 6 (20%)

d.) Number of total female recaps: 24 (80%)

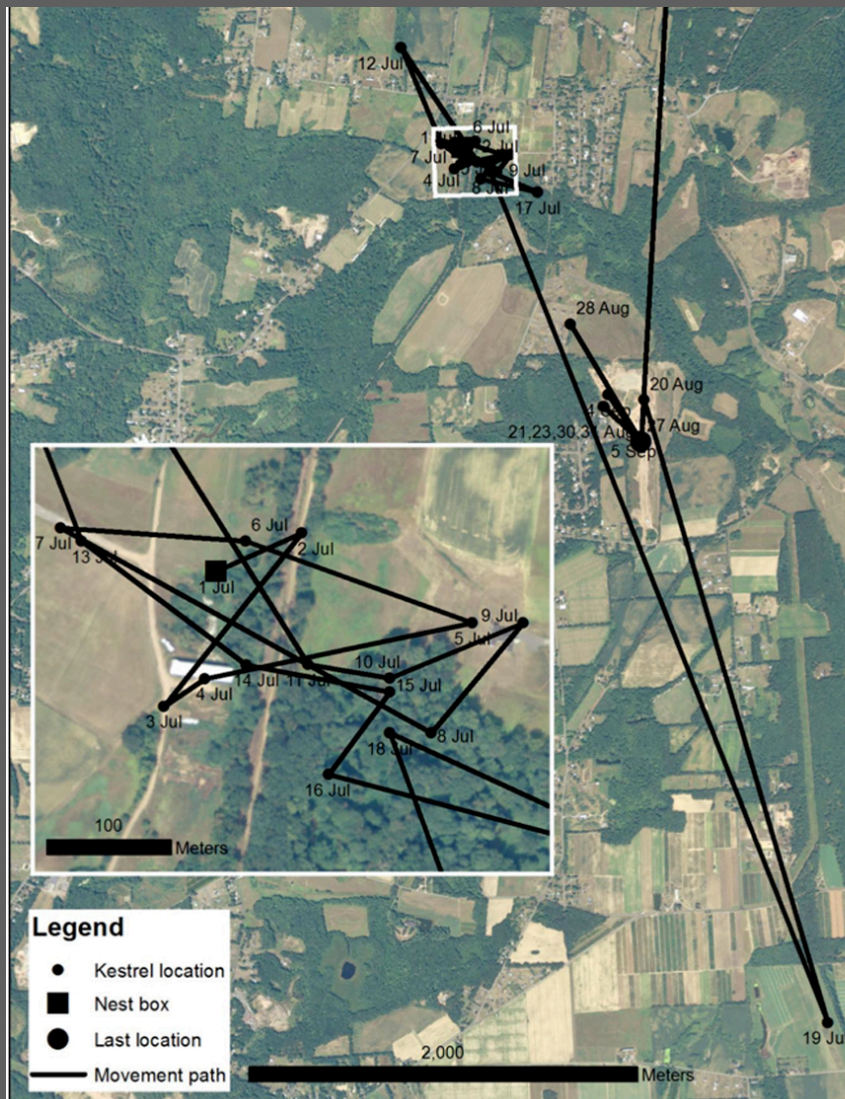


## First Arrivals by Gender 2016



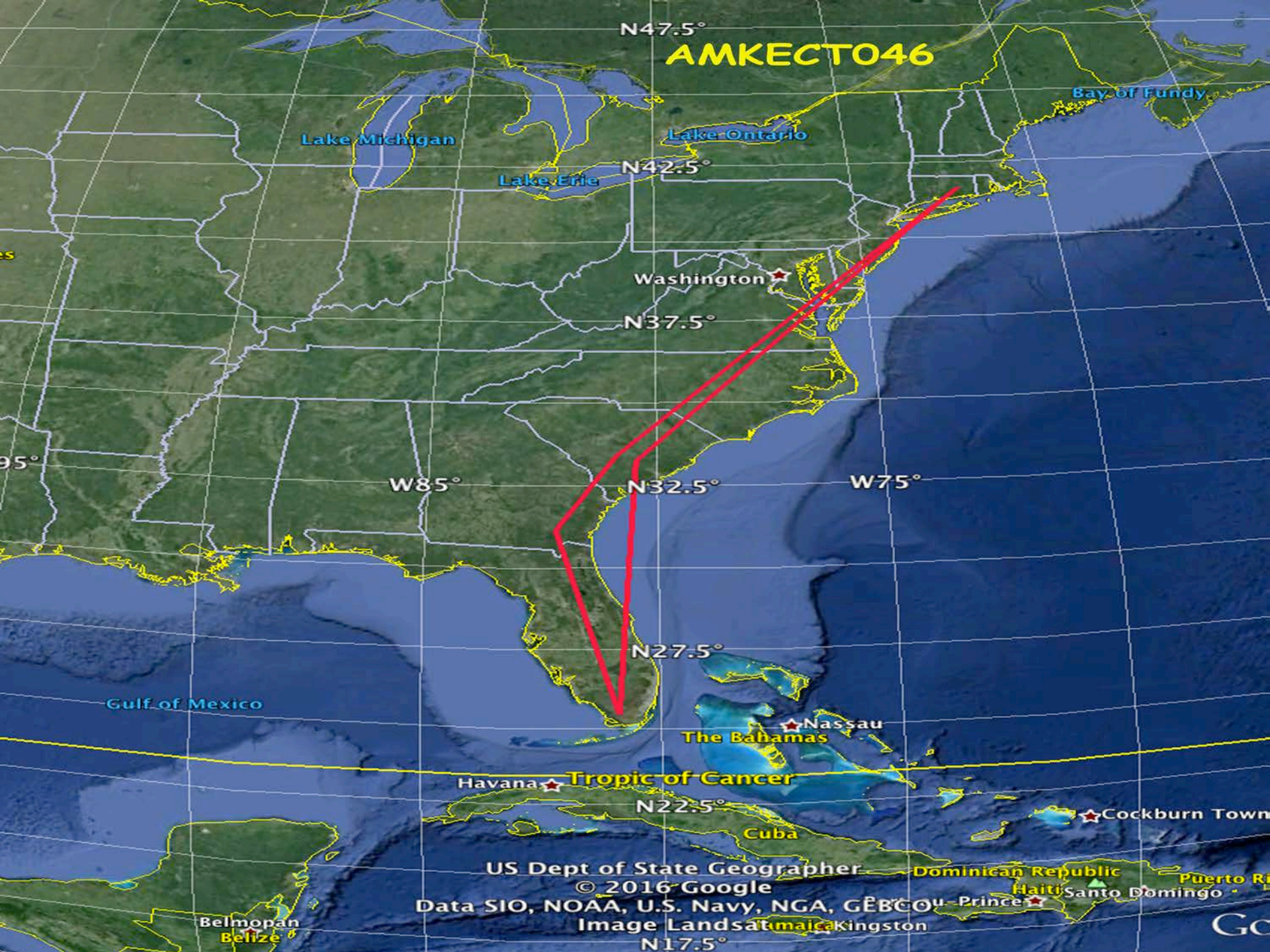


# Where do these little guys go after they leave the box?



Supplementary Figure 3. Movements of American Kestrel ID 216.333 from fledge date of 26 June 2014 to last observation date of 15 September 2014.





**AMKECTO46**

N47.5°

N42.5°

N37.5°

N32.5°

N27.5°

N22.5°

N17.5°

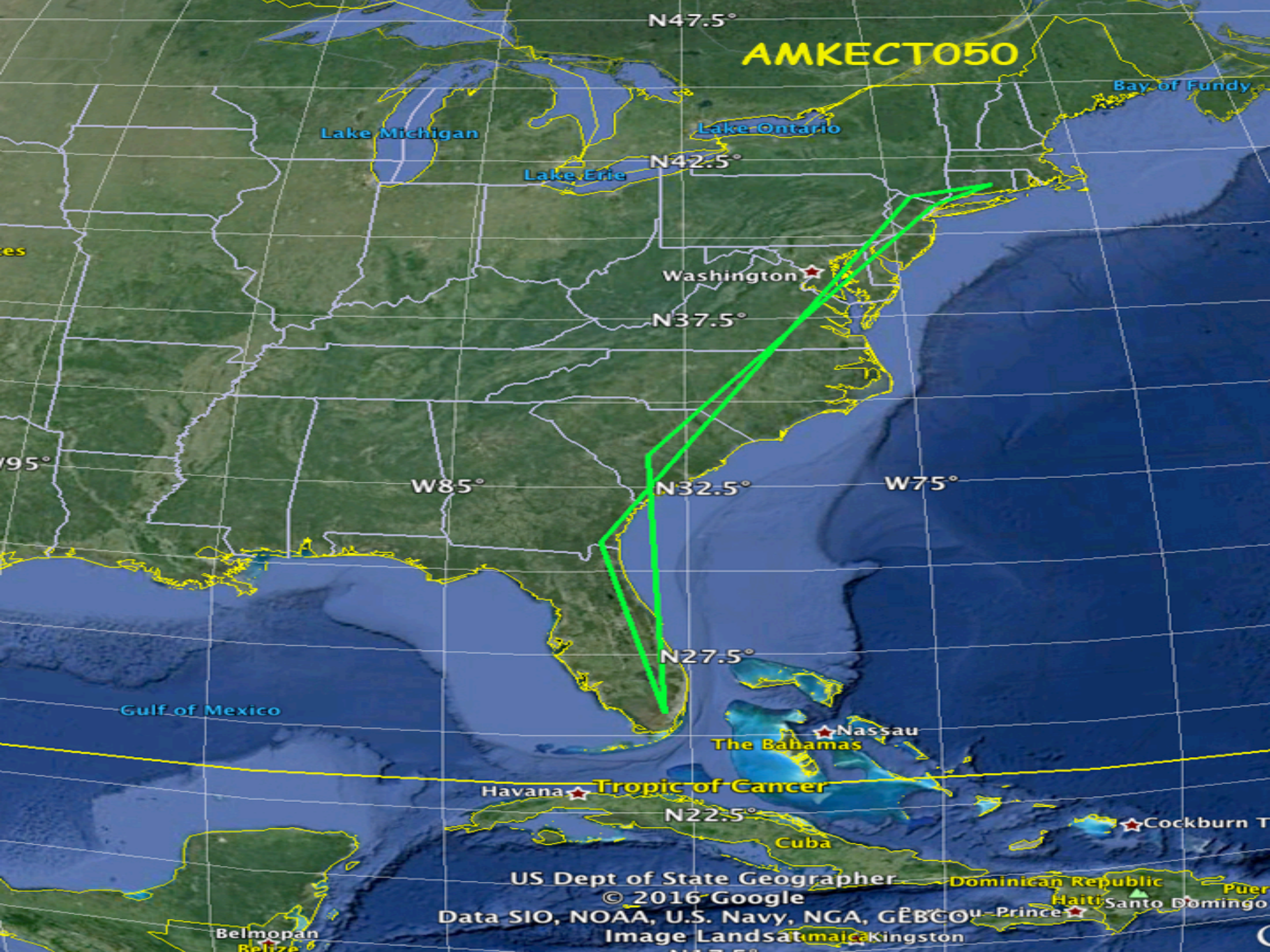
W85°

W75°

US Dept of State Geographer  
© 2016 Google  
Data SIO, NOAA, U.S. Navy, NGA, GEBCO  
Image Landsat

GO





AMKECT050

N47.5°

Lake Michigan

Lake Ontario

Lake Erie

N42.5°

Washington

N37.5°

W85°

N32.5°

W75°

Gulf of Mexico

N27.5°

Nassau  
The Bahamas

Havana Tropic of Cancer

N22.5°

Cuba

US Dept of State Geographer

© 2016 Google

Data SIO, NOAA, U.S. Navy, NGA, GEBCO

Image Landsat

Dominican Republic

Haiti Santo Domingo

Princes

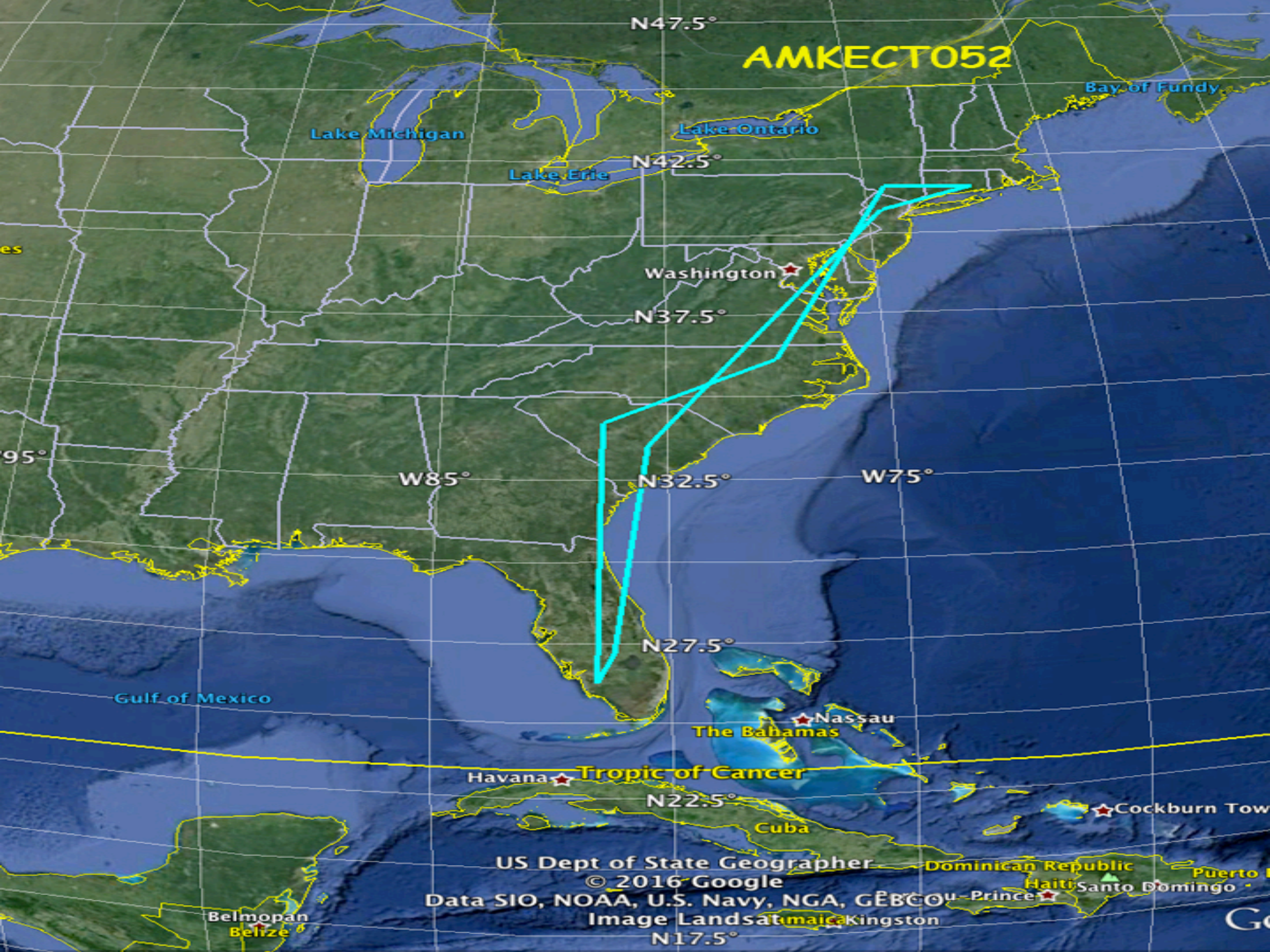
Kingston

Belmopan  
Belize

Puer

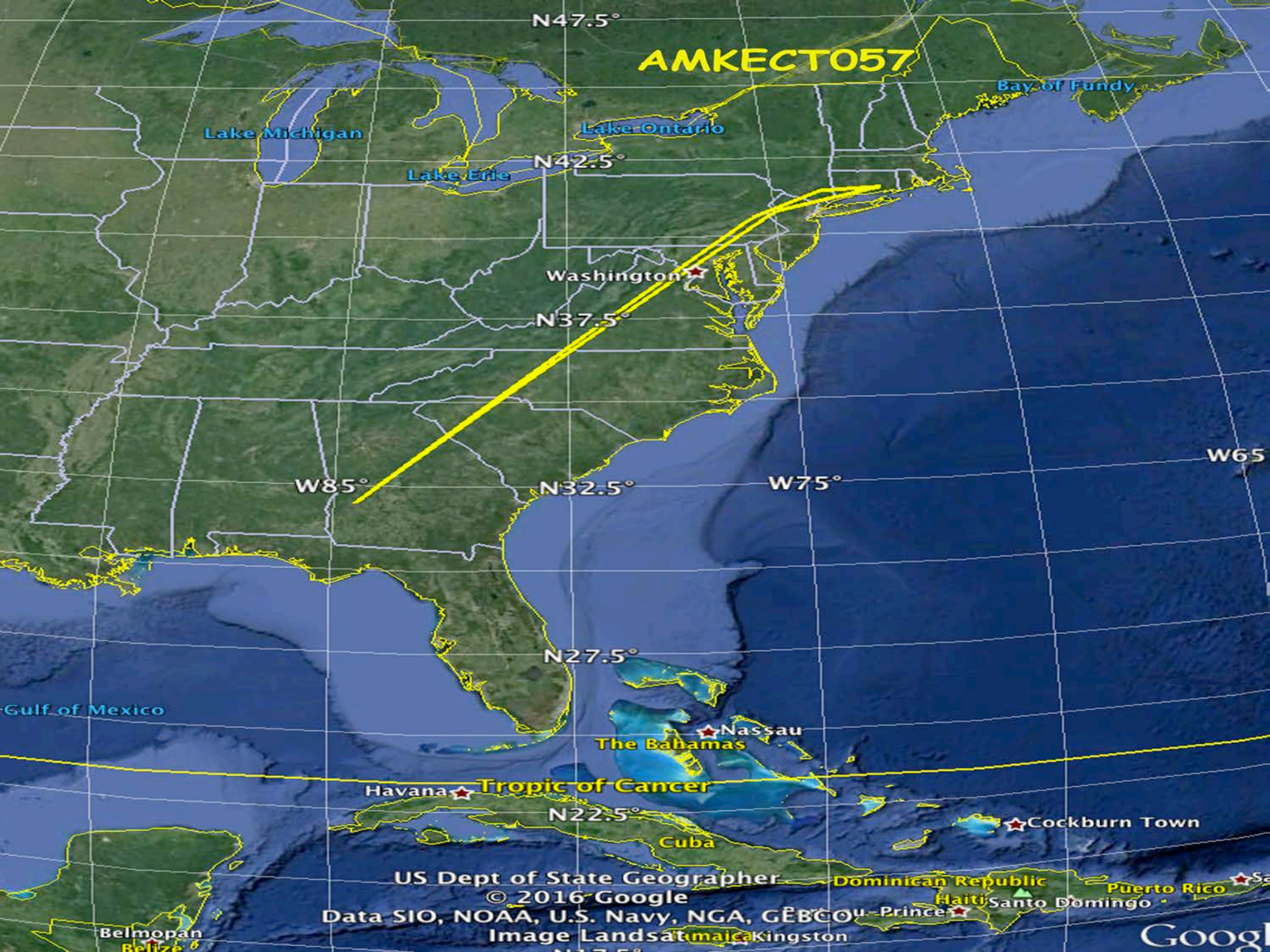


# AMKECT052



US Dept of State Geographer  
© 2016 Google  
Data SIO, NOAA, U.S. Navy, NGA, GEBCO  
Image Landsat  
maica





# AMKECT057

Lake Michigan

Lake Ontario

Lake Erie

Bay of Fundy

N47.5°

N42.5°

N37.5°

N32.5°

N27.5°

N22.5°

W85°

W75°

W65°

Washington

Gulf of Mexico

The Bahamas  
Nassau

Havana  
Tropic of Cancer

Cuba

Cockburn Town

US Dept of State Geographer  
© 2016 Google  
Data SIO, NOAA, U.S. Navy, NGA, GEBCO  
Image Landsat

Dominican Republic

Haiti

Puerto Rico

Prince

Kingston

Belmopan  
Belize

Google

So there you have it.....

One person-even an old  
guy with a ladder- CAN  
make a difference.