

American Kestrel Project in Alberta

Mitchell Warne P.Biol.



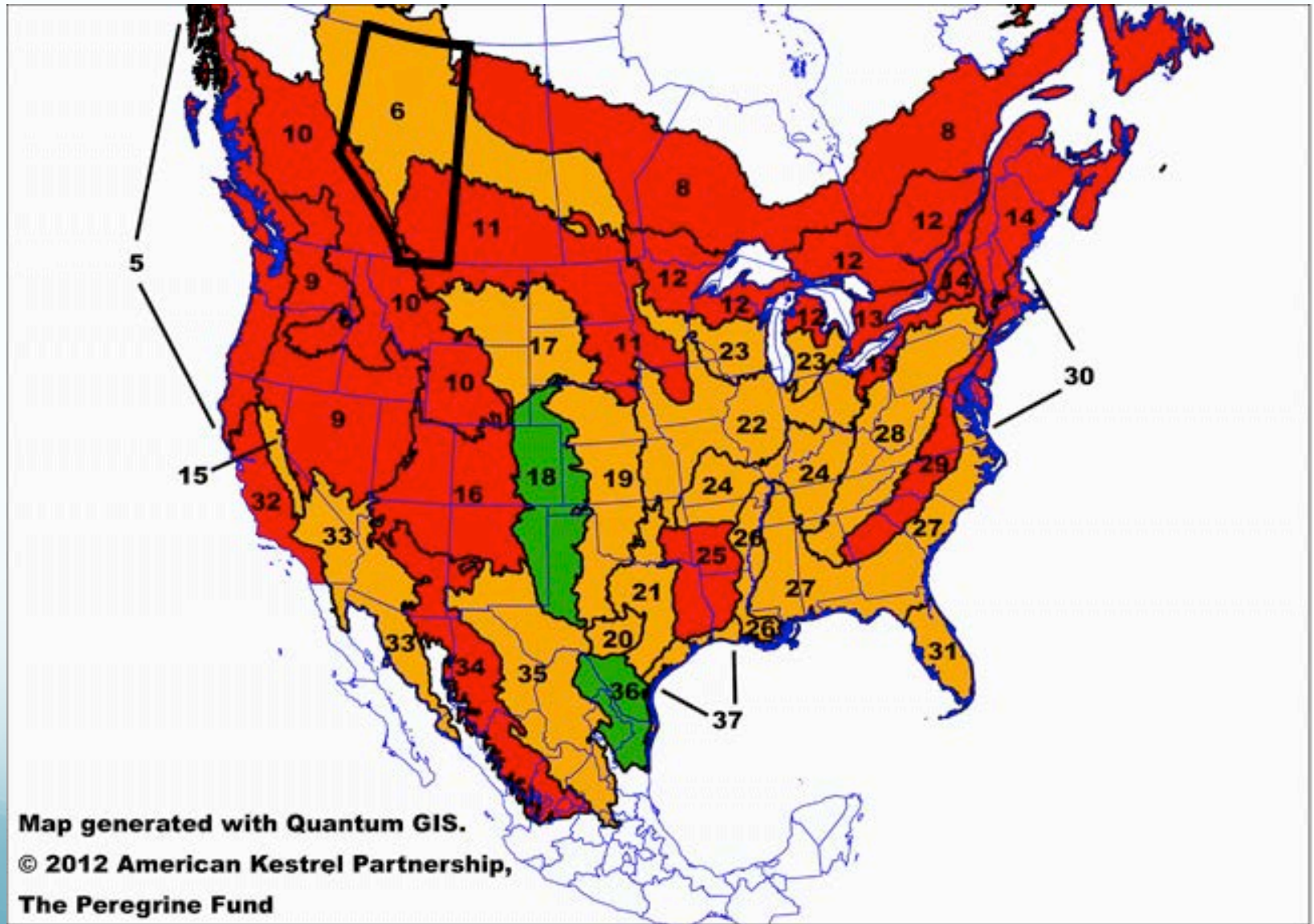
Warne in the Wild

Outline

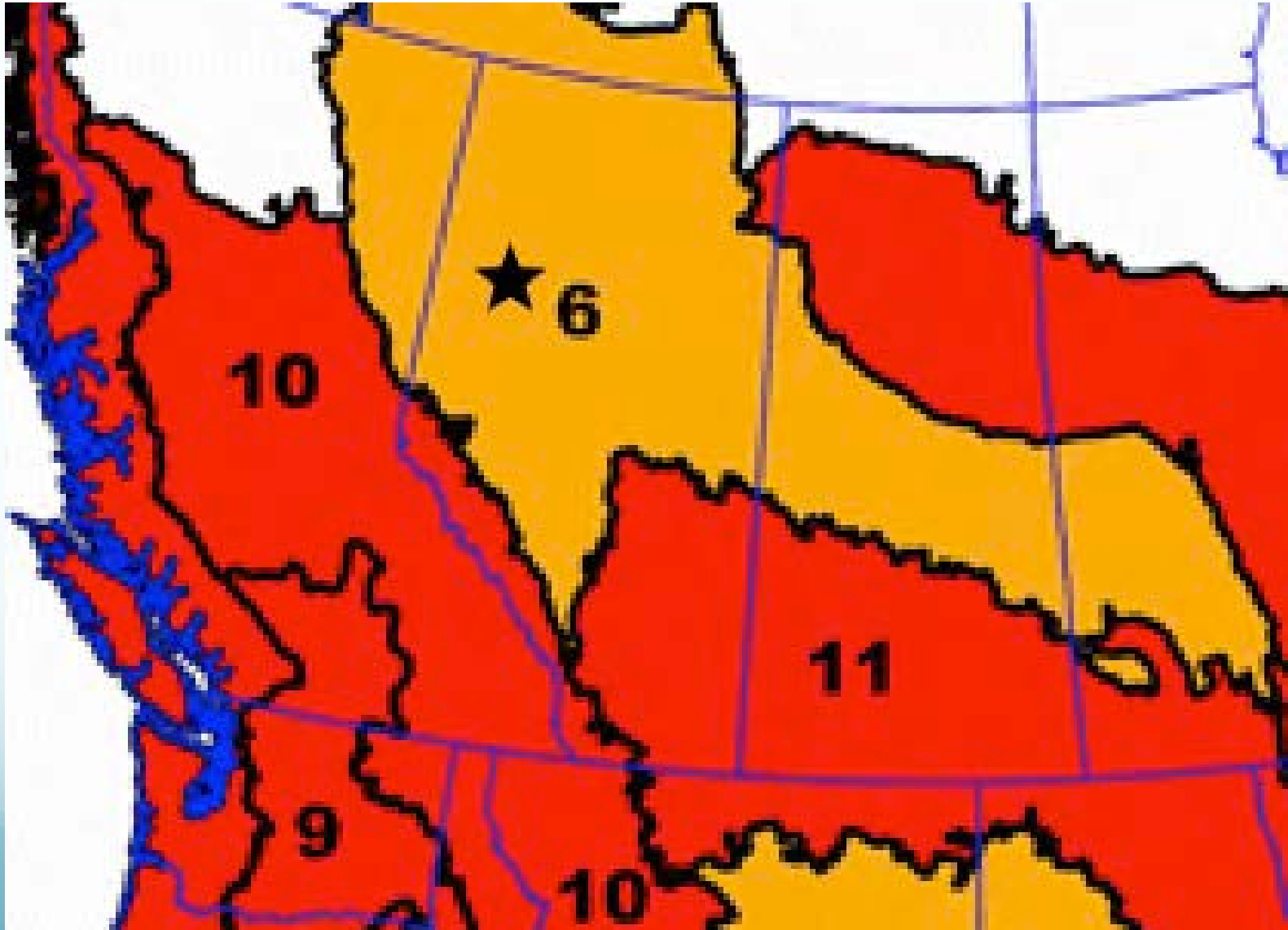
- Location
- Results
- Problems
- Next Steps
- Acknowledgements



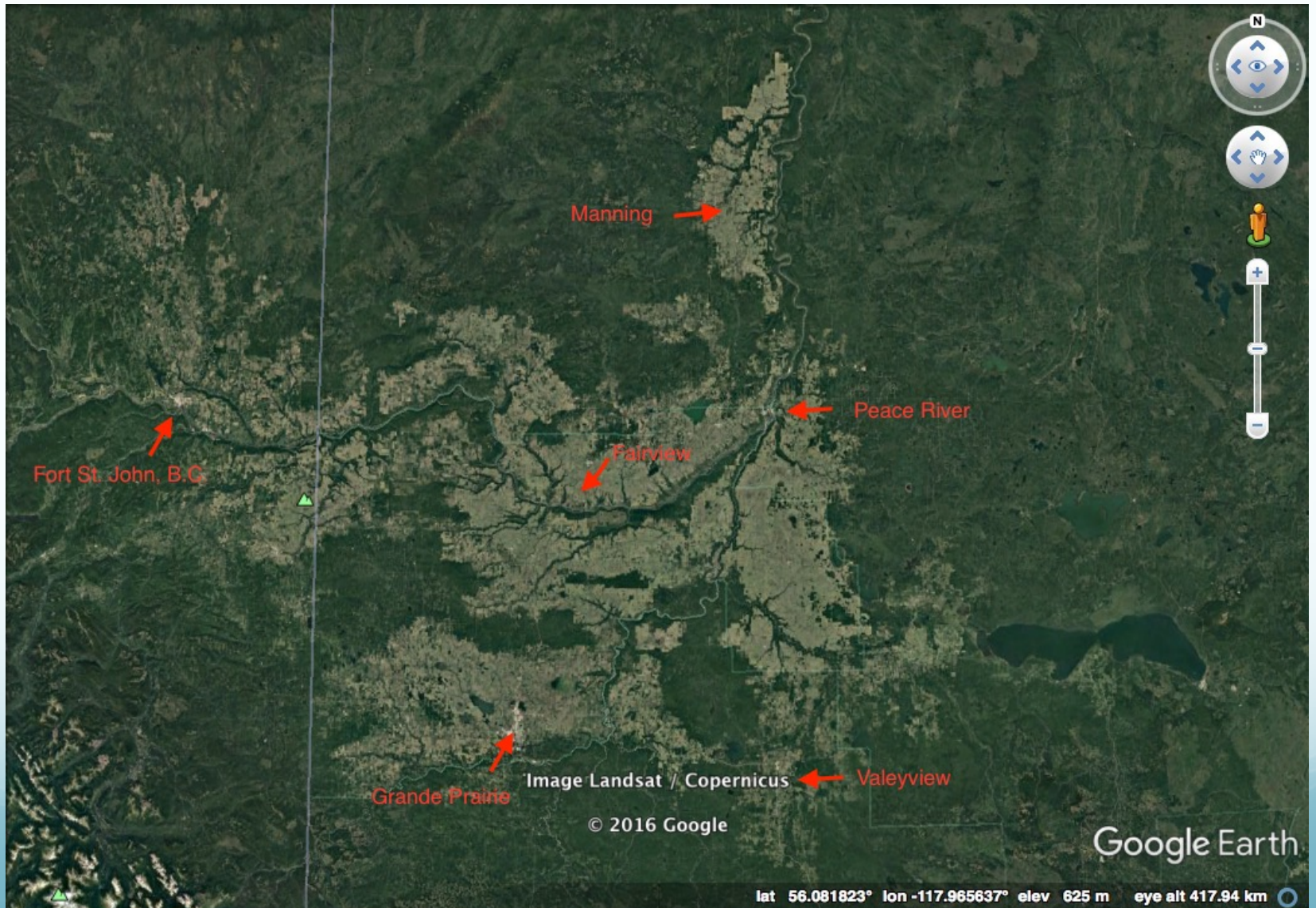
Alberta



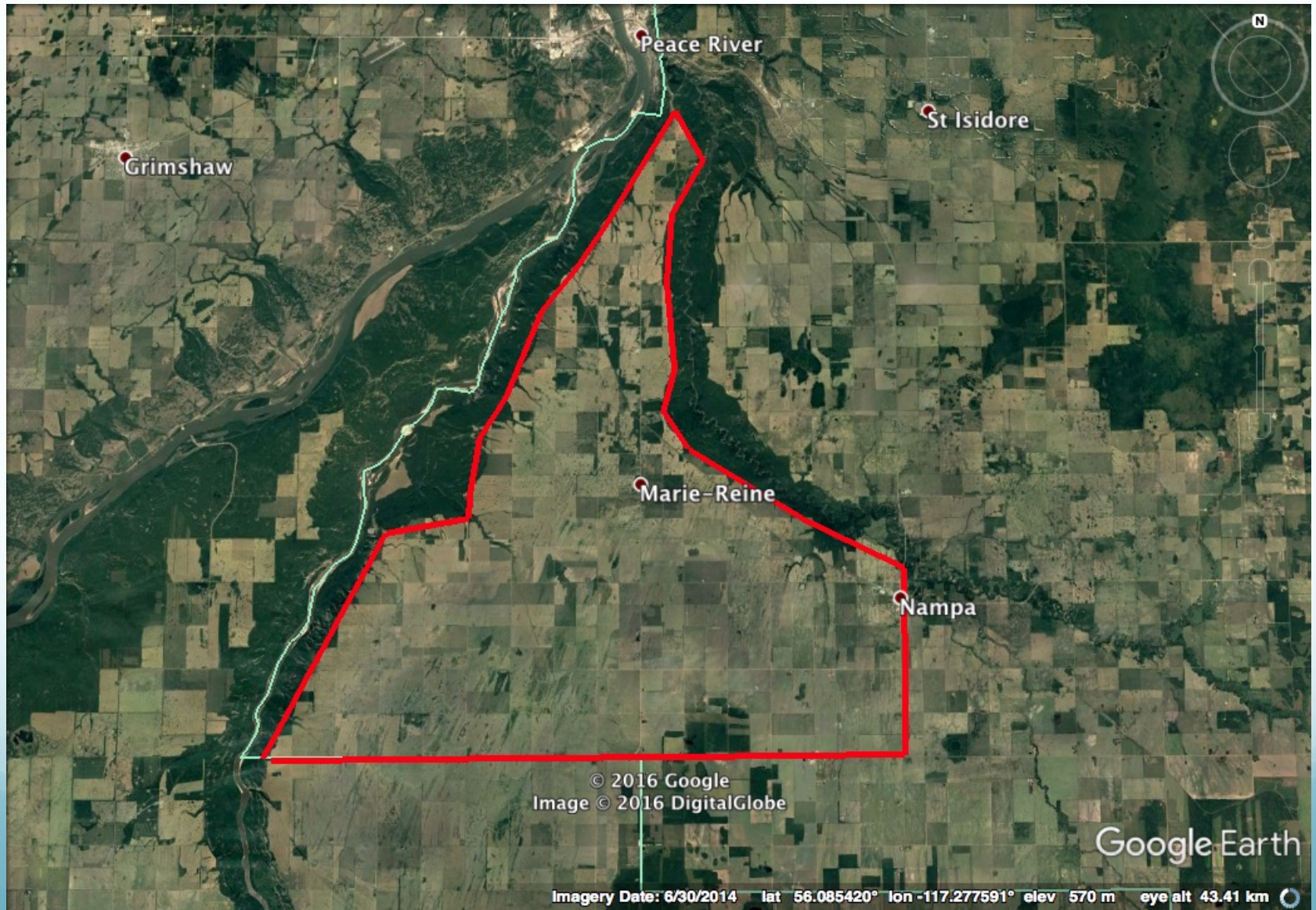
Peace River



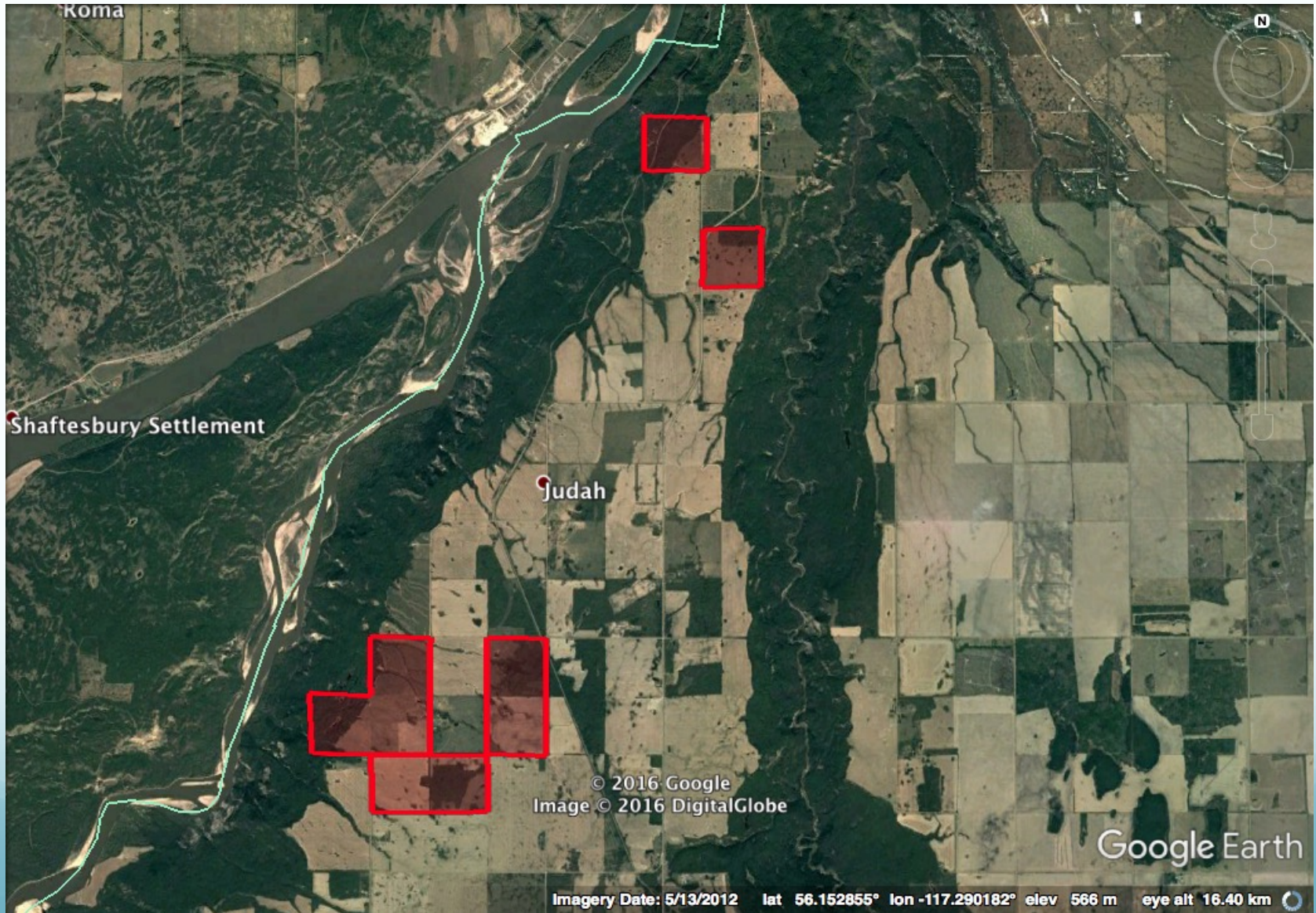
Peace Region



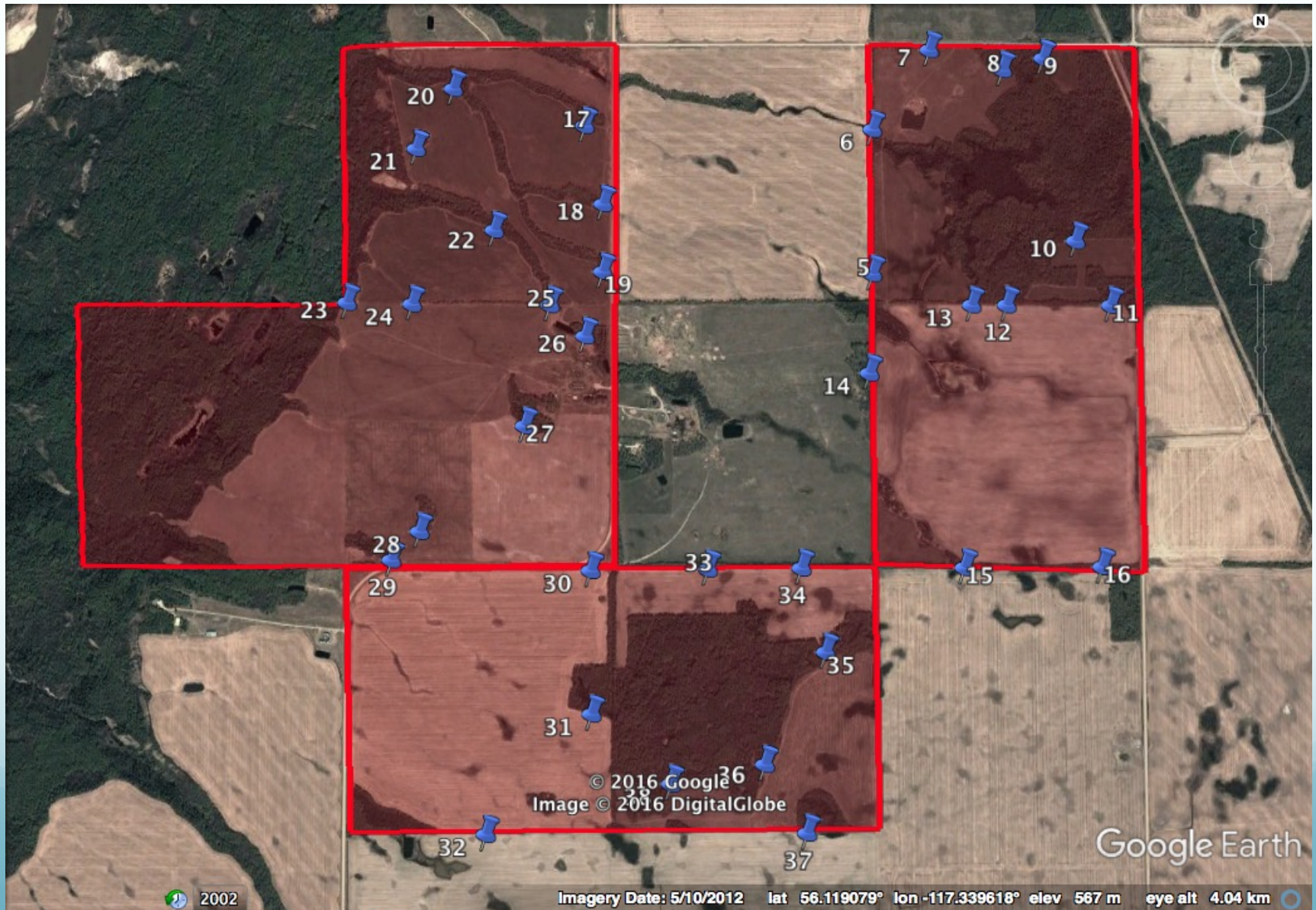
Judah Hill



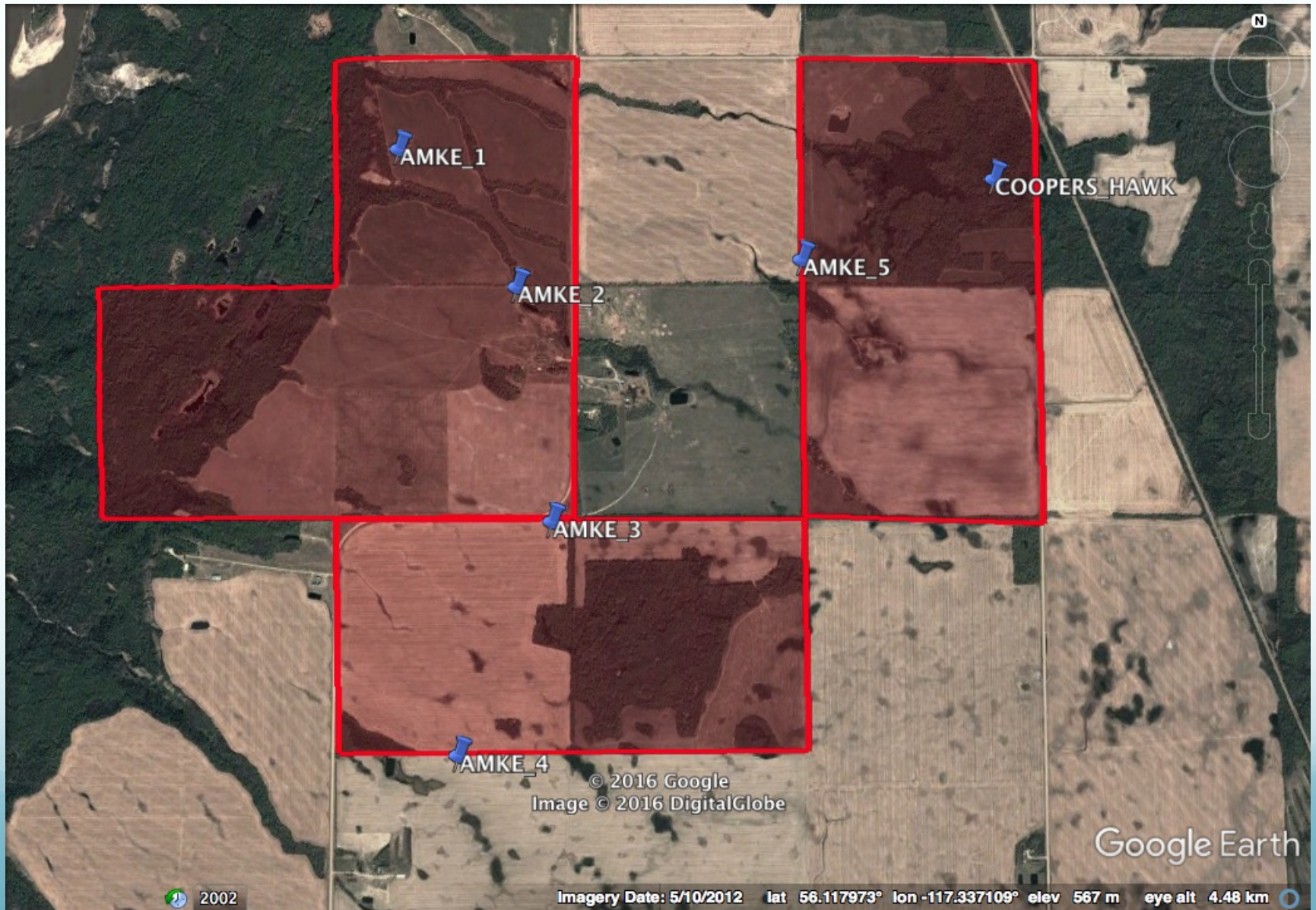
Locations To Date



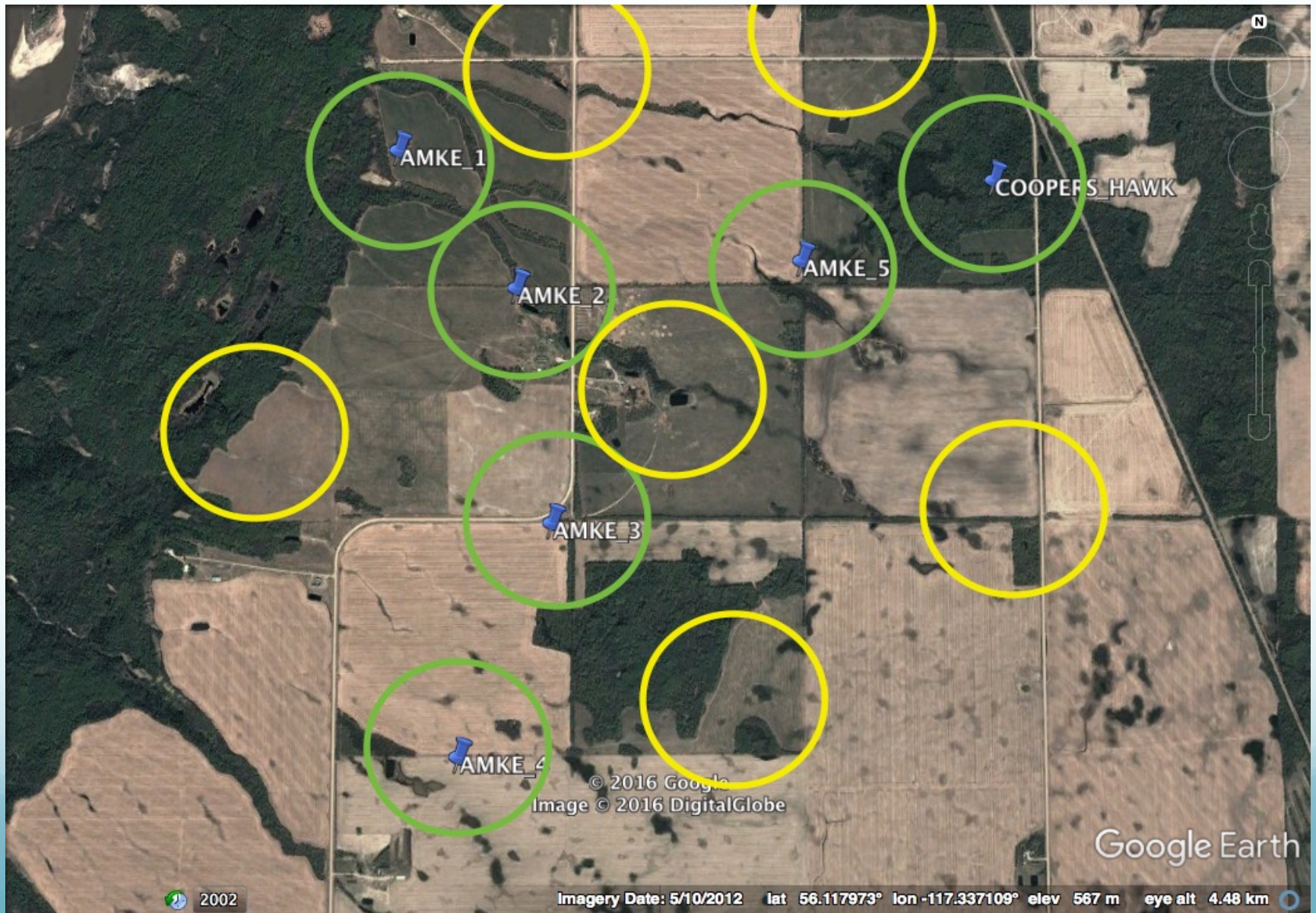
All Nest Boxes



Nest Box Use



Nest Box Use Spacing



Since the 80's

- Local farmers & ranchers say the population peaked in the 70's & 80's then declined drastically
- You could find one or maybe two pairs of kestrels on Judah Hill prior to the nest box installation



Installation

- Started installing boxes in 2012
- Finished installing boxes in April 2015
- Roughly half of the boxes were installed in early April 2015



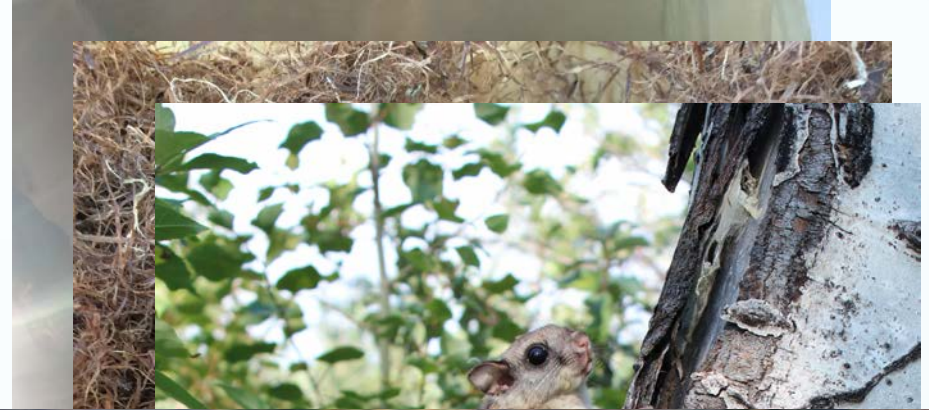
Kestrel Successes to Date

- 2012 = 1 nest box
- 2013 = 2 nest boxes
- 2014 = 3 nest boxes
- 2015 = 6 nest boxes
- 2016 = 7 nest boxes
- Total = **19 nest box uses**
- 2012 = 5 – 6 kestrels
- 2013 = 10 – 12 kestrels
- 2014 = 15 – 18 kestrels
- 2015 = 30 – 36 kestrels
- 2016 = 35 – 42 kestrels
- Total = **95 – 114 kestrels**
(57 – 76 chicks)



Nest Box Problems

- Limited time off work to install and monitor
- Cooper's hawks
- Red squirrels fill them up with mushrooms and/or nest in the boxes
- Northern flying squirrels may also be using the boxes
- Sharp-tailed grouse lek

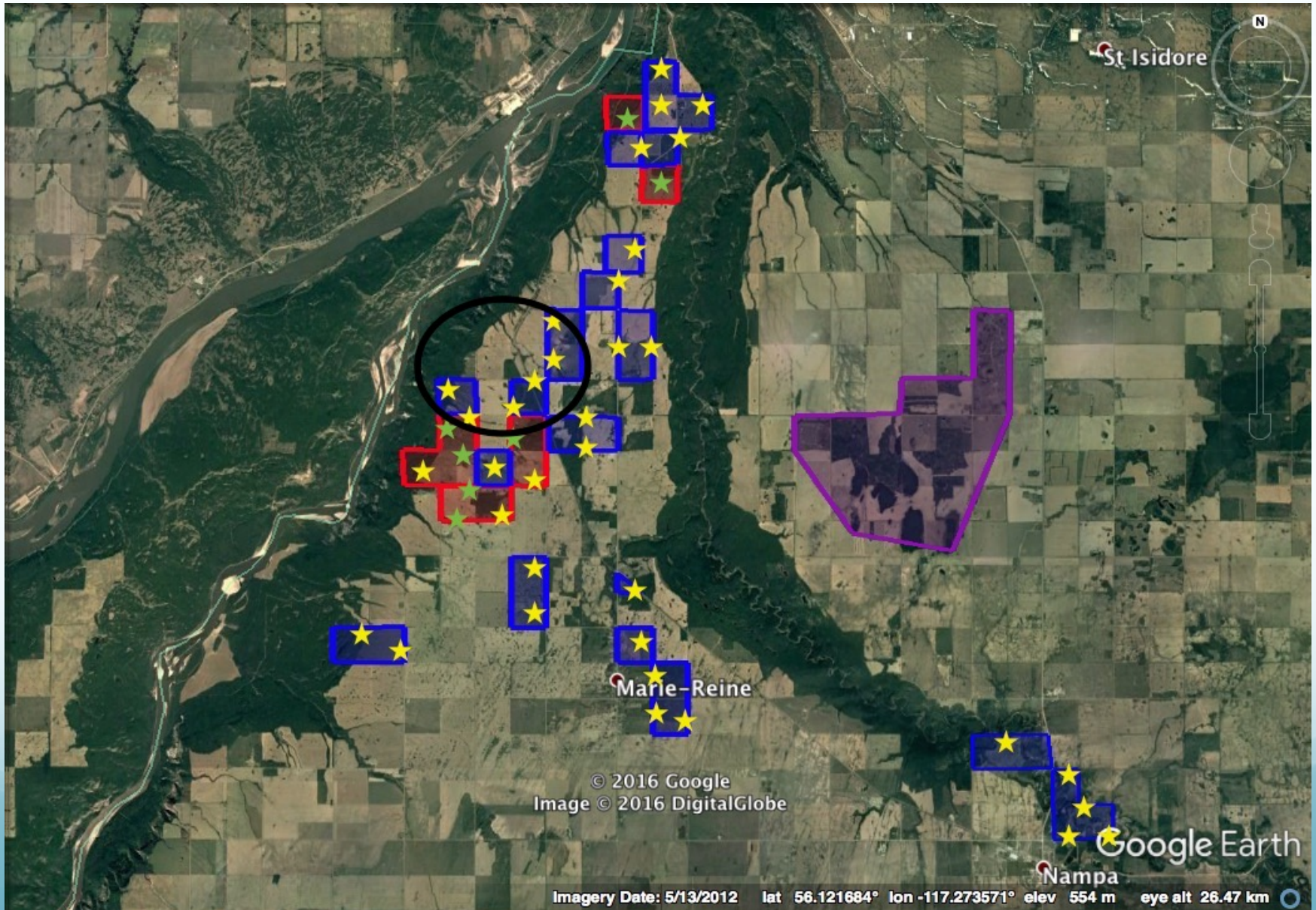


Next Steps

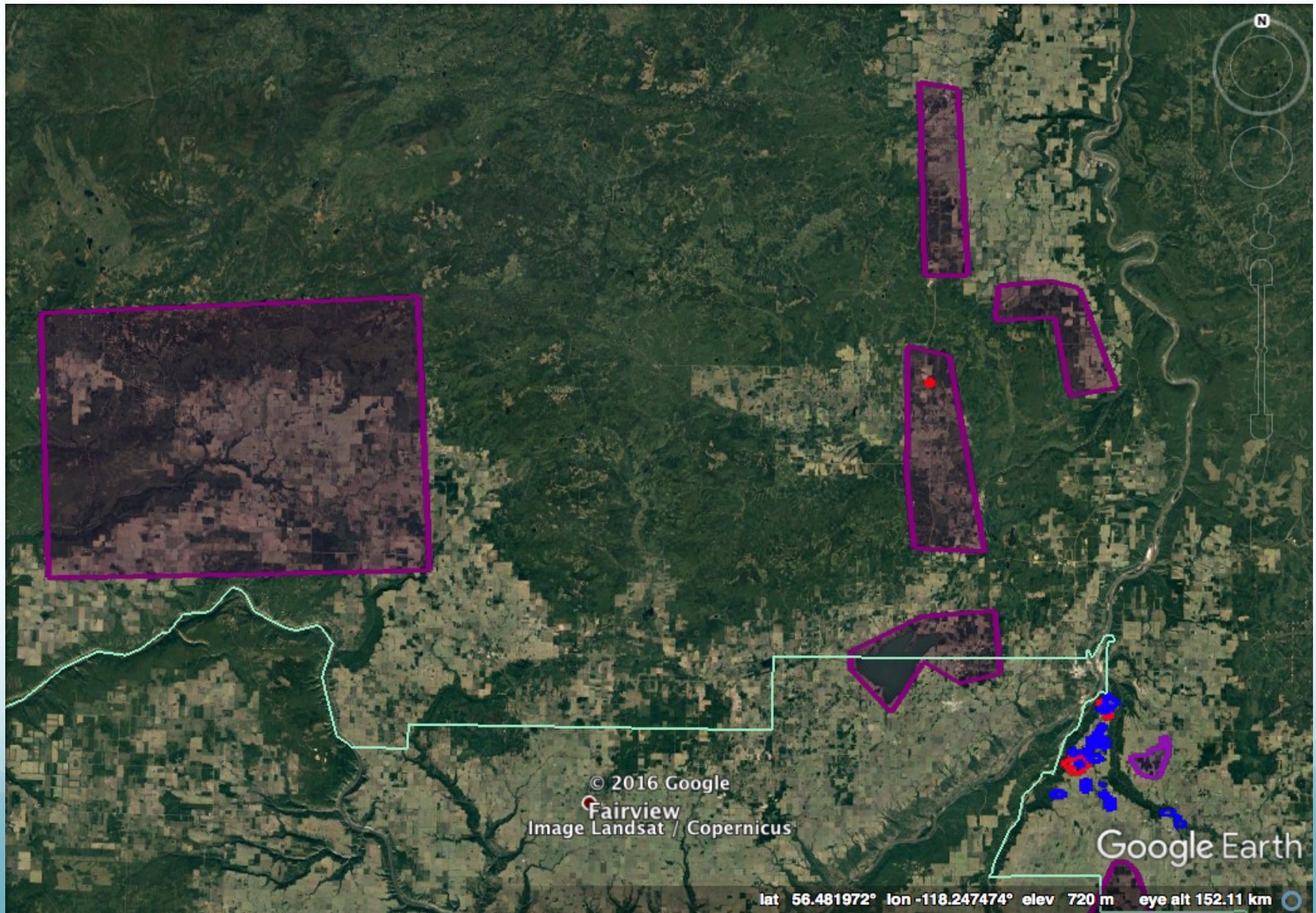
- Three pronged plan:
 1. Reposition the unused boxes so there are only 1-2 boxes per quarter section
 2. Expand the Judah Hill nest boxes to include other private land while expanding to the wider Peace Region
 3. Get a province wide program initiated, even if it is only on private land (would incorporate #2)



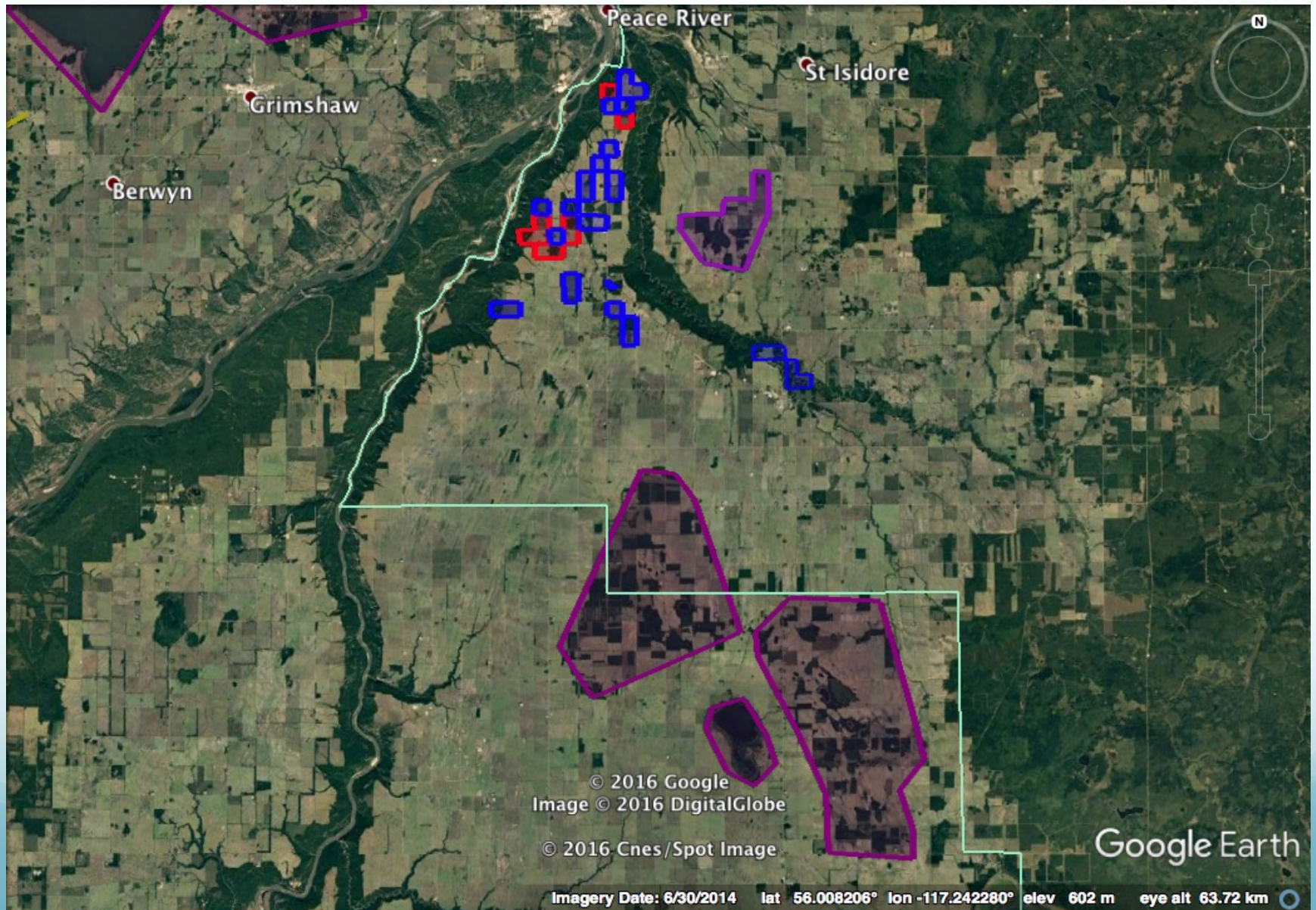
1. Judah Hill in 2017



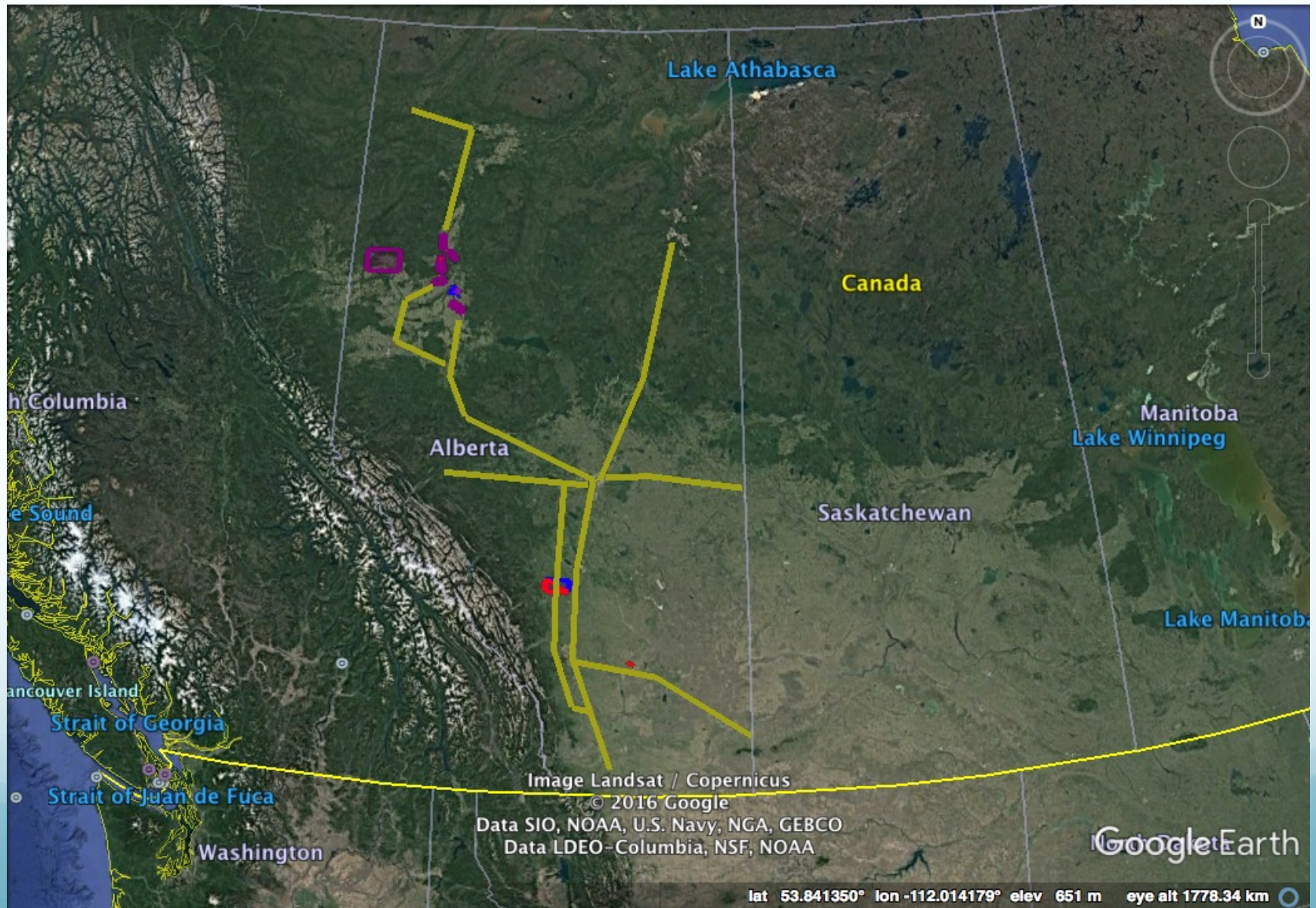
2. North & West Peace Region



2. South & East Peace Region



3. Alberta Wide Program



Acknowledgements

- The Peregrine Fund
- American Kestrel Partnership
- Ken Warne

