

BRANDYWINE

# ZOO NEWS





## IN THIS ISSUE

Conservation Leadership Academy . . . . .	2
The Southern Pudu . . . . .	3 & 4
Urban WILD: Another WILD Year . . . . .	5
Scouts at the Zoo . . . . .	6
VolunTEENs . . . . .	7
Clues at the Zoo . . . . .	8
BOO at the ZOO! . . . . .	9
SANTA at the ZOO! . . . . .	10
The DEAI Committee . . . . .	11
Thank You Supporting Partners . . . . .	12
Thank You Annual Fund Donors . . . . .	13
First Blizzard of 2022 . . . . .	14
Upcoming Events & Programs . . . . .	15

## Board of Directors

Arlene Reppa, President  
 Serena Wilson-Archie, Vice President  
 Gabriel Baldini, Treasurer  
 Sarah Cole, Secretary  
 Kevin Brandt  
 Cameron Fee  
 Candice Galvis  
 Linda Gray  
 Amy Hughes  
 Megan McGlinchey  
 Michael Milligan  
 William S. Montgomery  
 Cathy Morris  
 Matthew Ritter, (DNREC)  
 Richard Rothwell  
 Daniel F. Scholl  
 Mark Shafer, Executive Director  
 Brint Spencer, Zoo Director  
 Francie Warther

## Support Staff

Melanie Flynn, Visitor Services Manager  
 Kate McMonagle, Marketing &  
 Special Events Manager  
 Shaylyn Harmon  
 Membership Coordinator

## EDITOR

Kate McMonagle\*\*

## WRITERS

Meghan Hoopes\*\*

Jennifer Klotz\*\*

Janey Kramlik\*

Abigail McBride\*\*

## PHOTO

## CONTRIBUTIONS

Mark Bosshardt\*

Robert Fries

Meg Hall\*

Meghan Hoopes\*\*

Janey Kramlik\*

Rebecca Pilkington\*

Jim Smigie

Carlee Wadding\*

## DESIGN/PRINTING

Professional

Duplicating, Inc

\* Delaware State Parks Staff Member

\*\* Delaware Zoological Staff Member

The Zoo News is a publication of the  
 Delaware Zoological Society.

On the Cover:  
Welcome Haechan!

The three-year-old southern pudu male gained fame in 2019 after K-Pop fans donated to name him in honor of a member of the popular group NCT-127. Now that the pudu is a mature adult, he has a new engagement at the Brandywine Zoo to be paired with a potential mate. For more, read the full stories on pages 3 and 4.



Photo by:  
Keeper Mark

Conservation Leadership Academy  
is here!

By Jen Klotz, Community Engagement Lead at Brandywine Zoo

In continuing with the mission of the Brandywine Zoo to inspire wildlife conservation, we have created a new program for teens called Conservation Leadership Academy. Our goal is to increase their awareness of conservation in action through community-based conservation opportunities. A select group will be chosen and meet once a month from February through October, while designing and facilitating their own project in their own community. Projects can range from organizing a cleanup effort to planting a pollinator garden. Each monthly meeting is based around a topic and how it weaves into conservation efforts locally and worldwide. Topics include, but are not limited to, human-wildlife conflict, plastic pollution, climate change, and diversity and inclusion. A related service-learning opportunity occurs monthly too! Alongside all this, participants will be trained as zoo docents allowing yet another way to reach the hour requirement needed for program completion. With all this knowledge, CLA teens will be wonderful mentors to our youth docents and hopefully inspire future academy candidates. Conservation Leadership Academy was made possible through a grant from the Institute of Museum and Library Services, offering funds for participants' project work, t-shirts, and a monetary award at completion of the program. Keep an eye out for this logo around town and the positive change they create in Wilmington!



# Tiny But Mighty – The Southern Pudu

The Brandywine Zoo is on average, smaller than most zoos in major American cities. The collection has varied dramatically since its origins in 1905, once exhibiting bears, elk, and even a sea turtle to today's collection which includes red panda, capybara, and several species of birds. The Zoo has streamlined its collection and redesigned several older habitats, while building positive momentum to its future goals include a master plan developed in 2018.

As the Brandywine Zoo continues working towards the multi-million-dollar master plan, Our Zoo Reimagined, the animal collection is shifting to reflect that development. The \$3.5 Madagascar habitat, which opened in 2020, showcases three species of lemurs, radiated tortoises, and helmeted guinea fowl along with messaging on conservation initiatives within the island nation. The Zoo's current project, a \$4.3 million state-of-the-art Animal Care Center, is due to open this spring and will drastically expand veterinary and animal management capabilities. The ACC is approximately four times the current hospital space and will have specialized spaces for treatment, animal holdings, and record keeping. The holding spaces will be used for incoming animals, which need to undergo a 30–90-day quarantine period upon arrival, to ensure they are healthy when introduced to the Zoo's current collection. Future collection animals will include the species selected for the next phase of the master plan: a new entrance and South American wetlands habitat.

This dynamic mixed species habitat will one day include flamingos, sloths, and the Zoo's newest hooved residents – southern pudu. Also known as the “pudu deer” or “dwarf deer,” southern pudu are native to the temperate forests, shrublands, and secondary forests of South America. Although the species is the world's second smallest deer, it is the largest native herbivore in much of its range. The species' Latin name, Pudu puda is adapted from Mapudungun, the language of the Mapuche people, who are indigenous to Chile and Argentina.

Southern pudu are closely related to the smallest deer species, the northern pudu. Both are members of the deer family, Cervidae. “Cervids,” as deer are called in the zoological community, are evolutionarily related to



other ruminants and even-toed ungulates – meaning they chew their cud and have two hooved toes on each foot. They are found in a wide variety of habitats including rainforests, deserts, and mountainous regions, vary in size from the pudu to moose, and have some shade of brown fur. Many cervids are excellent swimmers, use scent marking as a main form of

communication between individuals of the same species, and typically have excellent night-vision. In almost all members of the deer family, males grow antlers and experience rut, or a surge of hormones during breeding season when competing for females or territory. The males first grow antlers “in velvet,” or a soft velvet-like covering, until the boney head-ware reaches full size (which depends on species and age of the individual) and rub the velvet off on their surroundings to reveal the “hard antlers” underneath.



Southern pudu adults stand at approximately 14-17 inches at the shoulder and weigh between 25-30 pounds; causing most zoo guests to believe they are seeing a fawn instead of an adult! Adults have fur coats that vary between different shades of dark brown, while fawns (baby pudu) have white spots for the first few weeks of life, like white-tailed deer fawns. Males are polygynous and may breed with multiple females each year. Although typically solitary when not in breeding season, breeding pairs may spend prolonged periods together, and fawns will become independent around eight months of age.

Male pudu have antlers, either velvet or hard, most of the year; they will drop them in late fall and almost immediately begin growing the next set. Pudu are primarily diurnal (active during the day), but can often be observed resting throughout their habitat and ruminating (chewing their cud) if there are no signs of predators. The pudu's small size often means it is preyed upon by puma, spotted cats, dogs, and large birds of prey. However, its size also helps it stay hidden. Often camouflaged by its fur coat and small stature, pudu can move through ground cover with ease. They are also extremely adept jumpers and will often play-spar with one another, either parents and offspring or a bonded pair. This “practice” is practical in the wild – their quick moves allow them to dart and dodge predators.



Pudu, like all other deer, are browsers, eating leaves from taller plants (as opposed to grazers that consume grasses). They will also eat fruits, flowers, and bark of plants as they browse. One of the biggest barriers to their conservation is the remote locations they inhabit – but that fact may also help them survive in their more remote locations. Like other wild herbivores, pudu face a variety of threats including deforestation and fragmented habitats, encroachment from feral dogs and invasive species, and diseases spread by grazing livestock.

Pudu in human care are cooperatively managed between institutions accredited by the Association of Zoos and Aquariums and the Southern Pudu Species Survival Plan (SSP). Through its master plan, the Brandywine Zoo has committed to housing pudu in the future South American habitat. However, the Zoo was able to bring the species in well before the ground is even broken for the new habitat! The Zoo repurposed and combined three older habitats, once housing clouded leopards

among other species, to create a larger space for a multi-species habitat. The Zoo has since housed three southern pudu since 2021: a mother-daughter pair from the Jacksonville Zoo and a male from the LA Zoo.

Visitors can currently see the younger female, Clover, and the male, Haechan, in their habitat to the left of the picnic circle, between the barnyard and the burrowing owls. The older female, Chloe, was sent to another AZA zoo in the fall of 2021 to be paired with a potential mate. The current pudu pair shares the habitat with toco toucans and red-footed tortoises, who are also native to South America. Both the toucans and tortoises are off habitat and will return when the weather warms this spring. As the pudu settle into their new home, there may be the clickity clack of tiny hooves in their future; another step towards Brandywine Zoo's commitment to the conservation of wild animals and the places they call home.



## Welcome Haechan!

Have you *herd*? There's a new pudu in Wilmington! Haechan, a four-year-old male southern pudu, arrived in the fall of 2021 to establish the Zoo's first breeding pair for the species. He joined Clover, a two-year-old female, who arrived with her mother from the Jacksonville Zoo last spring. As pudu typically separate from their moms to establish their own territories and breeding opportunities, the young pair is in the prime. Learn a little about two of the Zoo's newest residents:

### Meet Haechan (pronounced Hae – Chan):

- Birthday: December 19, 2018
- Birthplace: Los Angeles Zoo and Botanical Gardens
- Parents: Steph (mother) and Mario (father)
- Current weight: 9.6kg or 21.2lb
- Personality: Laid back,
- Favorite foods: alfalfa hay and sweet potato
- Namesake: Haechan (nee Lee Dong-hyuck), of the K-Pop band NCT-197

### Meet Clover:

- Birthday: May 22, 2020
- Birthplace: Jacksonville Zoo and Gardens
- Parents: Chloe (mother) and Ren (father)
- Current weight: 9kg or 20lb
- Personality: Energetic, curious
- Favorite foods: alfalfa hay and blueberries





# Urban **WILD**: Another **WILD** Year

## Brandywine Zoo's Camera Trapping Projects

By Abigail McBride, Conservation Research Technician

Each year, we lose more wild spaces to urbanization and more people are calling these urbanized areas home. Cities are typically not built with wildlife in mind, but nevertheless, they still contain important habitat. Many animals have been able to adapt to the opportunities that come with urbanization, however there are still obstacles to city living. As cities become the fastest growing habitat on the planet, it is worth investigating how wildlife uses these spaces and the human-wildlife interactions that come along with sharing these spaces.

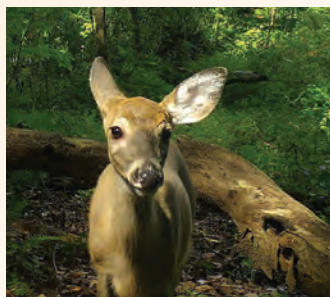
Since 2017, the Brandywine Zoo's Urban Wild project has been monitoring urban wildlife across New Castle County, DE and southeastern Pennsylvania. Focusing primarily on urban terrestrial mammals, this program consists of a number of camera traps across New Castle



County, with additional satellite cameras at select locations of interest. The data collected from our cameras is shared with a number of international research projects,

which resulted in several publications using Wilmington data in 2020-2021. This program mainly relies on volunteer community scientists for camera deployment and data tagging.

Our primary passive monitoring camera trap project is in partnership with Lincoln Park Zoo's Urban Wildlife Institute, which coordinates Urban Wildlife Information Network (UWIN), a network of 42 and counting cities across North America and Europe. Our part of this network monitors terrestrial mammal populations using camera traps at more than 30 locations across New Castle County, DE, and Chester County, PA. We also conduct an annual survey each September to submit to Snapshot Mammal (formerly Snapshot USA), a terrestrial mammal study, which is coordinated through the North Carolina Museum of Natural Sciences and the Smithsonian Conservation and Biology Institute.



With the data collected, we aim to better understand species diversity in urban environments, how animals change their behavior patterns in regard to levels of urbanization, and how this impacts spatial ecology.



In understanding what species are most common (or uncommon), by the level of urbanization, as well as when they are most active, we hope to inform conservation and land use decisions, maximize positive human-wildlife interactions while limiting conflicts, and better connect communities in general to the wildlife living right in their own backyards.

In spring, 2021, we piloted, with 11 other UWIN cities, the codeployment of AudioMoth acoustic monitors at camera sites. These were deployed as a beta test as the network looks to expand beyond mammal surveys with cameras. Our devices were set to a frequency to detect songbirds and deployed during peak spring migration for a period of two weeks. By collecting the audio calls from songbirds, we increase the likelihood of identifying all species that were present in the test site. The Zoo has also been using our 3D printer by testing and designing 3D printed cases for the AudioMoths. These cases will protect the delicate AudioMoths while they are deployed. Finally, we launched an iNaturalist project to collect coyote sightings in Delaware, called Delaware Coyotes.

Great thanks to our team of community science volunteers who contributed almost 300 hours to Urban Wild this year, deploying cameras and tagging data! If you want to get involved in our Urban Wild projects, check us out at <https://brandywinezoo.org/conservation/urbanwild/> and sign up to be a conservation volunteer!

### Important Links:

<https://www.inaturalist.org/projects/brandywine-zoo-urban-wild>

<https://naturalsciences.org/calendar/news/snapshot-usa-first-ever-nationwide-mammal-survey-published/>

<https://www.lpzoo.org/science-project/urban-wildlife-information-network/>





# Scouts and the Brandywine Zoo

By Meghan Hoopes, Education Programs Coordinator

After two long years, Scout Night is back! This after-hours event is exclusively for Boy, Cub, and Girl Scouts and their families. Scout Night is March 26, 4:30 – 7 pm. Join us for exciting activities, an up-close look at some animals, and stations around the zoo to help scouts work on badge and adventure requirements. Whether your troop or pack is looking to get a kick-start on their badges and adventures, or you're just looking for a fun group activity, Scout Night is a fun-filled evening for everyone! Pre-registration is required, so be sure to plan ahead!

If you're looking for a more laid back opportunity for scouts to have some fun, we will also be hosting Scout Day on March 27 during the Zoo's open hours 10 am – 4 pm. Custom activity booklets will be available for Daisy, Brownie, and Junior Girl Scouts, and Lion, Tiger, Wolf, Bear, Webelo, and AOL Cub Scouts. Each booklet will lead scouts to self-guided activity stations

and give them a head start on earning their badges and adventures. These activity booklets take around one to two hours to complete and are great for a troop to do together, or a family to do on their own!

If your troop or pack is looking for a private event, the Brandywine Zoo also host Scout Workshops. Each workshop focuses on completing as many requirements of one badge or adventure as possible, and includes the opportunity to meet some of ambassador animals up close! Workshops are available for many different badges and adventures. Plus, groups can choose to work with our scout coordinator to create a custom program which are great for groups with a mix of age levels!

For more details about all of these amazing programs, please visit our scout page on our website at [BrandywineZoo.org/Scouts](http://BrandywineZoo.org/Scouts), or send us an email at [Education@BrandywineZoo.org](mailto:Education@BrandywineZoo.org)



*Scout Day!*

MAR 27

Lead your own adventure on a special self-guided tour through the zoo!

BRANDYWINE ZOO



*Scout Night!*

MAR 26  
4:30-7PM

Enjoy an evening at the zoo in this specially designed event for scouts and their families!

BRANDYWINE ZOO



## Toucan FACTS

Toucans sleep on their beaks so that they can stay warm, because they manage their body temperature by adjusting the blood that flows to their beak.



# VolunTEENs

By Meghan Hoopes, Education Programs Coordinator

We are pleased to announce that our VolunTEEN program is accepting applicants! The Brandywine Zoo VolunTEEN program offers teens ages 14-17 the opportunity to gain valuable experience in the education and zoological field. VolunTEENs can take on many responsibilities in the zoo as Camp Counselors Assistants, Barnyard Monitors, and Exhibit Interpreters.

Camp counselor assistants help our Zoo Camp Staff with on-site day camps. Counselors will help lead activities and games, assist staff with managing campers, and contribute to an overall FUN and educational camp for our campers! Barnyard monitors assist zoo guests in friendly interactions

with the goats during their visit. This includes educating guests about the goats, and showing them how to gently interact with the goats. Exhibit interpreters have the unique responsibility of providing a fun, interactive, animal-themed learning environment for our zoo guests of all ages. Zoo Naturalists will perform informal learning presentations throughout the zoo,

and help to educate our guests about the wonderful animals that call the Brandywine Zoo home.

We are accepting applications for this competitive program until March 27! Visit our volunteer page on our website at [BrandywineZoo.org/Volunteer](http://BrandywineZoo.org/Volunteer) for more information and a link to the online application.



BRANDYWINE ZOO

# ZOO CAMP

Join us for a wild summer! Sessions are available for ages 4-17.

Weekly from **June 13 - Aug 26**





# Clues at the Zoo

By Meghan Hoopes, Education Programs Coordinator

Warning: guests of the Brandywine Zoo should be on the lookout for the notorious thief The Raptor! Her team pulled off the sapphire heist at the New Brandywine Bank during our Clues at the Zoo event last October, and rumor has it she's planning another big job soon. We only hope that she doesn't strike again at our next Clues at the Zoo event on May 15!



older!) and get ready to hunt for clues and solve some puzzles throughout the zoo.

October's Clues at the Zoo event was the first of its kind hosted by the Brandywine Zoo, and we are bringing it back by popular demand! Feedback from zoo and Delaware State Parks employees, and from our wonderful guests who participated in October, is being used to make May's Clues at the Zoo even better than the first.

If you enjoy escape rooms, solving puzzles, and having a good time, join us after-hours on May 15 for a special escape room-style adventure! Grab your friends and family (we recommend those 15 years or

If you've got a young detective at home, be sure to look out for our summer Clues at the Zoo event in July, which will be designed for kids of all ages!





# BOO at the ZOO!



We had some wild and wonderful fall and winter events in 2021! Thanks to all who joined us!



# SANTA at the ZOO!



We had some wild and wonderful fall and winter events in 2021! Thanks to all who joined us!



# The DEAI Committee

By Janey Kramlik, Lead Keeper/Veterinary Technician

The Brandywine Zoo strives to reach all members of our community. Our efforts are being led by our Diversity, Equity, Accessibility, and Inclusion (DEAI) Committee. The DEAI Committee has been hard at work looking at how we can increase awareness of staff and volunteers, diversify our staff, and meet the needs of our visitors. If you have ideas on how we can be more inclusive, please send us your thoughts at [education@brandywinezoo.org](mailto:education@brandywinezoo.org)!

Here are a few of the sources that we have shared with staff:

Resource Format	Title	URL
Article	Ibram X. Kendi Walks His Talk With 'Be Anti-Racist' Podcast	<a href="https://tinyurl.com/4uwshzjj">https://tinyurl.com/4uwshzjj</a>
Book	Demystifying Disability: What to Know, What to Know, What to Say, and How to Be an Ally	<a href="https://tinyurl.com/2p9ewspw">https://tinyurl.com/2p9ewspw</a>
Instagram account	@shinanova (an indigenous Inuk woman)	<a href="https://tinyurl.com/mum7vjnh">https://tinyurl.com/mum7vjnh</a>
Podcast episode	Ologies: Neuroendocrinology (SEX & GENDER) with Daniel Pfau	<a href="https://tinyurl.com/yc3nefzk">https://tinyurl.com/yc3nefzk</a>
Video	Social Inequalities Explained in a \$100 Race	<a href="https://tinyurl.com/y6et6b2r">https://tinyurl.com/y6et6b2r</a>
Website	Birdability	<a href="https://www.birdability.org/what-we-do">https://www.birdability.org/what-we-do</a>



We are BUZZING with excitement over our Bee Sweet fundraising campaign and need your help to name at least 250 of the bees in our bee exhibit! We're accepting names through March 1, and will name the Queen bee on March 4.

Learn More Here - <https://brandywinezoo.org/support/bee-sweet/>



# Supporting Partners: *Thank you for your support!*





# Thank you for your support Annual Fund Donors!

On behalf of the Board of Directors of the Delaware Zoological Society and the animals at the Brandywine Zoo, thank you for your generous donations!

Each donation to our annual fund directly helps us provide innovative programs for children and young adults. Every donation also helps us upgrade the habitats for the animals here at the zoo and advocate for their counterparts in the wild.

Many thanks once again for Going a Little Wild and making a BIG difference at the Brandywine Zoo!

Donna & Ciro Adams	Sara & Charles Donaghy	Cindy & Eric Kohlmann	Richard Rothwell
The Fantastic Adezio Family!	Lyn Doto and Bill Montgomery	James Littman	Gale & Joseph Rutan
Agents and Corporations, Inc.	Elise Duffin	Kate & Phillip Liu	Samantha & Richard Sand
George Alderman	Exelon	Nancy & Lawrence Ludgus	Kristin & Joe Sanfilippo
Gabriella Arauco-Shapiro	Kim & Richard Facciolo	Sue Lunger	Karol A. Schmiegel
Darren Argo	Dr. Karen Feeney - Athena	Jack & Mary Lou Manlove	The Schroeder Family
Association of Zoos and	Chiropractic LLC	Steven & Carol Marino	Erich Schwerd
Aquariums	J. Harry & Jackie Feldman	Anne Martelli	Fred C. Sears
AstraZeneca	Jeff Flynn	Catherine Matsen	Mark Shafer
Harry Baetjer	Tom & Michele Fontana	Emily McAllister	Mark Sharnoff
Whitney Bakke	Karen Galanaugh	Patrick McCluskey	Rodney & Lynn Sharp
Gabe & Rachel Baldini	Joshua Gilbert -	Cecilia & John McCormick	Evelyn Skinner
Bank of America	In Honor Of Dylan Gilbert	Brian & Megan McGlinchey	David & Lee Slaw
Regina Barry	Joe & Katherine Gloyd	Ron & Barbara Mercer	James Smigie &
Jill Wade -	Gina Goggins	Carol Mesmer	Katherine Ward
In Memory Of Robin Beiler	Miguel Gonzalez	Chris Milionis	Julie Smith
Karl & Kristin Bennett	Donald Gouge, Jr.	Amy Monahan	Paul Smith
Veronica Boettger	Janice Grackin	Jessica Moran	Elizabeth Snyder
Barbara I. Bradley	Kenneth & Sandra Graham	Susan Moran	Charles Salkin-
Margaret & Robert Bradley	Laurie Gravell	Catherine Morris	In Honor Of Brint Spencer
Kevin Brandt	Mr. & Mrs. John E. Greer, Jr.	Sheila Mugabi	Spur Impact Association
Phyllis & Michael Brian	Sharon Hall	Mr. & Mrs. Thomas Murphy	Kash Srinivasan
Bunker Hill Elementary	Robert Hackett	Janet Sue Muzzi	Maile & Roland Statuto
Barbara Cannon	Paul & Deb Hartwick	Julia Neikirk	Richard Stat
Senator & Mrs. Thomas Carper	Jayne Harwell	Mike Newbold	Richard Stat -
Susan Cartwright	David Hawthorn	John Newlin	In Honor Of Larry Gehrke
W. Timothy Cashman, II	George & Weilu Helme	Susan Oldenburg	Debbie Stern
Christian Castillo	Bob & Tracy Hibner	Patty Olesky	Mr. & Mrs. Richard L. Sutton
CHUBB Charitable Foundation	Mr. & Mrs. Randy High	Mohan Pandit	Dave & Carolyn Swayze
Linda Clark	Virginia Hopkins	David Pantuliano	Mr. & Mrs. Murray Tate
Tom & Linda Cloud	Peter A. Horthy	Cathy & Mark Parsells	Rik & Karen Thomas
Andrew & Ashley Cloud -	Amy Hughes -	Chris & Mary Patterson	Sara Toner
In Honor Of Catherine Cloud	In Honor Of Tom Hughes	Larry Pelegrin	United Way of Delaware
Dorothy & Robert Colburn	Amy Hughes & Craig Smith	Verino Pettinaro	Rob & Kristy Vander Decker
Sarah Cole	Mr. & Mrs. H. Stanley Hughes	Gary Phillips - In Memory Of	Jason & Katie Van Druff
Chelsea Cooper	Tom Hughes	Kathleen Phillips	Vanguard
Jonathan Cooper	Sharrie Hurka	Sandy Pietlock	Norm & Suzy Veasey
Theo Corroon	Battina Illiano	Emily Poag	Melissa Veghte
David L. Craven	Mary Eileen Immediato	Shannon Post	Rebecca Von Hagel
Sandro Cuccia	Janet A. James	Leslie & Chris Raia	Tom Walz
Gloria Defalco	JPMorgan Chase & Co.	Christine Rankin	Francie & Richard Warther
Delaware Choral Arts	Karen Kambestad	Vera Lee Rao	Joelle Waterkotte
Association	Michelle & Dennis Kelleher	Regeneron	Mr. & Mrs. Thomas Webber
Melody Devoe	Susan Kelliher	Pharmaceuticals, Inc.	Ruth & Steve Williams
Nina Dipinto	Lynne & Fred Kielhorn	Arlene & Doug Reppa	Ashley Willis
Brian DiSabatino - EDIS	Dan & Mary Klein	Dereck Roberts - Dukes	The Wolak Family
John Doherty - Brandywine	Ann Knackstedt	Mr. & Mrs. Kenneth Robertson	Jamie Yates
Construction Co, INC	Lee Knackstedt	Michael & Becky Rosen	Sarah & Jerry Zweigenbaum



**Our first blizzard of 2022!**

*Thanks to the keepers for plowing the snow and taking care of the animals no matter what the weather. They even built a snow friend for Sandy, the sandhill crane!*





# Delaware Zoological Society

1001 North Park Drive, Wilmington, DE 19802



Delaware Zoological Society  
supporting the BRANDYWINE ZOO



## DELAWARE STATE PARKS

### SAVE THE DATE

# BREW AT THE ZOO

## June 3 - 5:30 - 8:30pm

Non-Profit  
Organization  
U.S.  
Postage Paid  
Wilmington, DE  
Permit No. 601

The Brandywine Zoo is managed by the Delaware Division of Parks and Recreation with the support of the Delaware Zoological Society.

The Department of Natural Resources and Environmental Control is committed to affirmative action, equal opportunity and the diversity of its work force.

ACCREDITED BY THE  
**ASSOCIATION  
OF ZOOS &  
AQUARIUMS**

Please let us know when you move; don't miss special invitations and Zoo News. Email to [memberships@brandywinezoo.org](mailto:memberships@brandywinezoo.org) or call 302-571-7788 Ext. 215.

Printed on recycled paper



## Upcoming Events & Programs



Scout Night .....	March 26
Scout Day .....	March 27
Earth Month Virtual Field Trip .....	Apr 6
Clues at the Zoo .....	May 14
Member Night .....	May 18
Endangered Species Day Virtual Field Trip .....	May 18



Club Zoo Camps

A Day in the Life Workshops

Little Nature Explorers, Spring Sessions

For dates and more information, visit our website at [BrandywineZoo.org](http://BrandywineZoo.org)